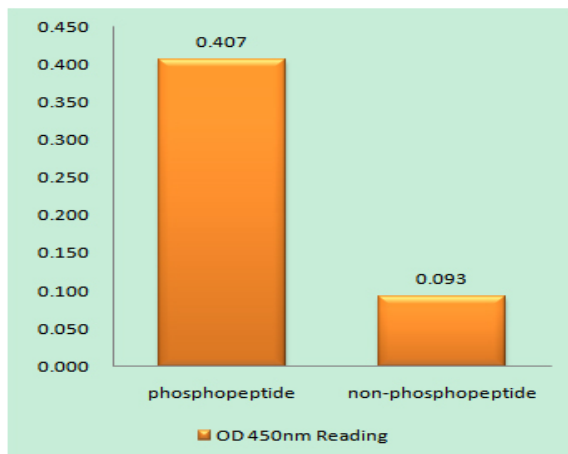


IGF-IR (phospho Tyr1161) Polyclonal Antibody

Catalog No :	YP0866
Reactivity :	Human;Mouse;Rat
Applications :	WB;IHC;IF;ELISA
Target :	IGF-1R
Fields :	>>EGFR tyrosine kinase inhibitor resistance;>>Endocrine resistance;>>MAPK signaling pathway;>>Ras signaling pathway;>>Rap1 signaling pathway;>>HIF-1 signaling pathway;>>FoxO signaling pathway;>>Oocyte meiosis;>>Autophagy - animal;>>Endocytosis;>>mTOR signaling pathway;>>PI3K-Akt signaling pathway;>>AMPK signaling pathway;>>Longevity regulating pathway;>>Longevity regulating pathway - multiple species;>>Focal adhesion;>>Adherens junction;>>Signaling pathways regulating pluripotency of stem cells;>>Long-term depression;>>Ovarian steroidogenesis;>>Progesterone-mediated oocyte maturation;>>Pathways in cancer;>>Transcriptional misregulation in cancer;>>Proteoglycans in cancer;>>Glioma;>>Prostate cancer;>>Melanoma;>>Breast cancer;>>Hepatocellular carcinoma
Gene Name :	IGF1R
Protein Name :	Insulin-like growth factor 1 receptor
Human Gene Id :	3480
Human Swiss Prot No :	P08069/P06213
Mouse Gene Id :	16001/16337
Rat Gene Id :	25718
Rat Swiss Prot No :	P24062/P15127
Immunogen :	Synthesized phospho-peptide around the phosphorylation site of human IGF-IR (phospho Tyr1161)
Specificity :	Phospho-IGF-IR (Y1161) Polyclonal Antibody detects endogenous levels of IGF-IR protein only when phosphorylated at Y1161.

Formulation :	Liquid in PBS containing 50% glycerol, 0.5% BSA and 0.02% sodium azide.
Source :	Polyclonal, Rabbit,IgG
Dilution :	WB 1:500 - 1:2000. IHC 1:100 - 1:300. IF 1:200 - 1:1000. ELISA: 1:40000. Not yet tested in other applications.
Purification :	The antibody was affinity-purified from rabbit antiserum by affinity-chromatography using epitope-specific immunogen.
Concentration :	1 mg/ml
Storage Stability :	-15°C to -25°C/1 year(Do not lower than -25°C)
Observed Band :	pro: 155kD, recetor beta: 95kD
Cell Pathway :	Oocyte meiosis;Endocytosis;Focal adhesion;Adherens_Junction;Long-term depression;Progesterone-mediated oocyte maturation;Pathways in cancer;Colorectal cancer;Glioma;Prostate cancer;Melanoma;
Background :	This receptor binds insulin-like growth factor with a high affinity. It has tyrosine kinase activity. The insulin-like growth factor I receptor plays a critical role in transformation events. Cleavage of the precursor generates alpha and beta subunits. It is highly overexpressed in most malignant tissues where it functions as an anti-apoptotic agent by enhancing cell survival. Alternatively spliced transcript variants encoding distinct isoforms have been found for this gene. [provided by RefSeq, May 2014],
Function :	catalytic activity:ATP + a [protein]-L-tyrosine = ADP + a [protein]-L-tyrosine phosphate.,disease:Defects in IGF1R may be a cause in some cases of resistance to insulin-like growth factor 1 (IGF1 resistance) [MIM:270450]. IGF1 resistance is a growth deficiency disorder characterized by intrauterine growth retardation and poor postnatal growth accompanied with increased plasma IGF1.,enzyme regulation:Autophosphorylation activates the kinase activity.,function:This receptor binds insulin-like growth factor 1 (IGF1) with a high affinity and IGF2 with a lower affinity. It has a tyrosine-protein kinase activity, which is necessary for the activation of the IGF1-stimulated downstream signaling cascade. When present in a hybrid receptor with INSR, binds IGF1. PubMed:12138094 shows that hybrid receptors composed of IGF1R and INSR isoform Long are activated with a high affinity by IGF1, with low a
Subcellular Location :	Cell membrane ; Single-pass type I membrane protein .
Expression :	Found as a hybrid receptor with INSR in muscle, heart, kidney, adipose tissue, skeletal muscle, hepatoma, fibroblasts, spleen and placenta (at protein level). Expressed in a variety of tissues. Overexpressed in tumors, including melanomas,

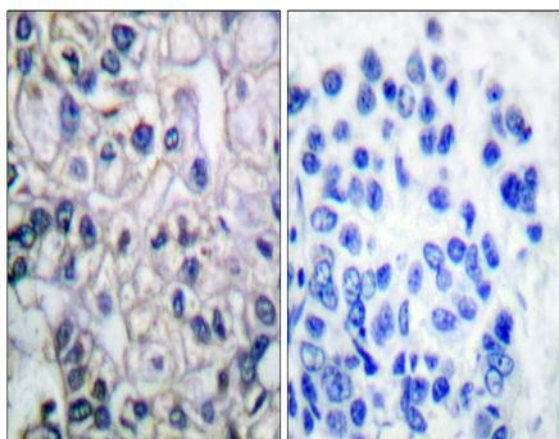
Products Images



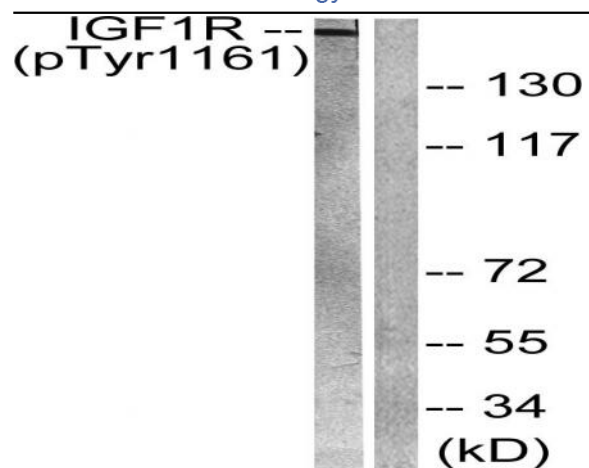
Enzyme-Linked Immunosorbent Assay (Phospho-ELISA) for Immunogen Phosphopeptide (Phospho-left) and Non-Phosphopeptide (Phospho-right), using IGF1R (Phospho-Tyr1161) Antibody



Immunofluorescence analysis of HuvEc cell, using IGF1R (Phospho-Tyr1161) Antibody. The lane on the right is blocked with the IGF1R (Phospho-Tyr1161) peptide.



Immunohistochemistry analysis of paraffin-embedded human breast cancer, using IGF1R (Phospho-Tyr1161) Antibody. The picture on the right is blocked with the IGF1R (Phospho-Tyr1161) peptide.



Western blot analysis of IGF1R (Phospho-Tyr1161) Antibody.
The lane on the right is blocked with the IGF1R (Phospho-Tyr1161) peptide.