

Smad2 (phospho Ser467) Polyclonal Antibody

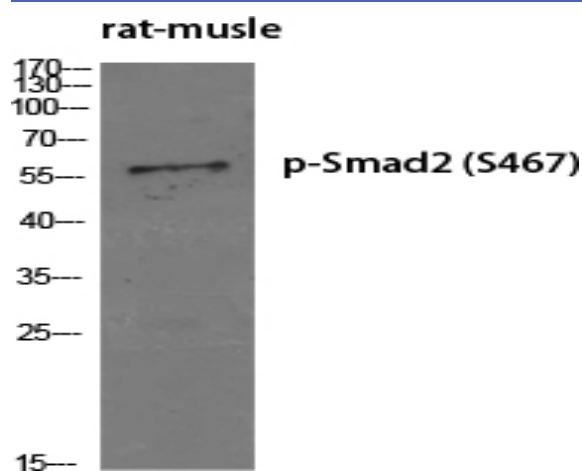
Catalog No :	YP0584
Reactivity :	Human;Mouse;Rat
Applications :	WB;IHC;IF;ELISA
Target :	Smad2
Fields :	>>Cell cycle;>>Endocytosis;>>Cellular senescence;>>TGF-beta signaling pathway;>>Apelin signaling pathway;>>Hippo signaling pathway;>>Signaling pathways regulating pluripotency of stem cells;>>Th17 cell differentiation;>>Relaxin signaling pathway;>>AGE-RAGE signaling pathway in diabetic complications;>>Chagas disease;>>Human T-cell leukemia virus 1 infection;>>Pathways in cancer;>>Proteoglycans in cancer;>>Colorectal cancer;>>Pancreatic cancer;>>Hepatocellular carcinoma;>>Gastric cancer;>>Inflammatory bowel disease;>>Diabetic cardiomyopathy
Gene Name :	SMAD2
Protein Name :	Mothers against decapentaplegic homolog 2
Human Gene Id :	4087
Human Swiss Prot No :	Q15796
Mouse Gene Id :	17126
Mouse Swiss Prot No :	Q62432
Rat Gene Id :	29357
Rat Swiss Prot No :	O70436
Immunogen :	The antiserum was produced against synthesized peptide derived from human Smad2 around the phosphorylation site of Ser467. AA range:418-467
Specificity :	Phospho-Smad2 (S467) Polyclonal Antibody detects endogenous levels of Smad2 protein only when phosphorylated at S467.

Formulation :	Liquid in PBS containing 50% glycerol, 0.5% BSA and 0.02% sodium azide.
Source :	Polyclonal, Rabbit,IgG
Dilution :	WB 1:500 - 1:2000. IHC 1:100 - 1:300. ELISA: 1:5000.. IF 1:50-200
Purification :	The antibody was affinity-purified from rabbit antiserum by affinity-chromatography using epitope-specific immunogen.
Concentration :	1 mg/ml
Storage Stability :	-15°C to -25°C/1 year(Do not lower than -25°C)
Observed Band :	58kD
Cell Pathway :	Regulates Angiogenesis; Cell_Cycle_G1S;Cell_Cycle_G2M_DNA; Protein_Acetylation
Background :	<p>The protein encoded by this gene belongs to the SMAD, a family of proteins similar to the gene products of the Drosophila gene 'mothers against decapentaplegic' (Mad) and the C. elegans gene Sma. SMAD proteins are signal transducers and transcriptional modulators that mediate multiple signaling pathways. This protein mediates the signal of the transforming growth factor (TGF)-beta, and thus regulates multiple cellular processes, such as cell proliferation, apoptosis, and differentiation. This protein is recruited to the TGF-beta receptors through its interaction with the SMAD anchor for receptor activation (SARA) protein. In response to TGF-beta signal, this protein is phosphorylated by the TGF-beta receptors. The phosphorylation induces the dissociation of this protein with SARA and the association with the family member SMAD4. The association with SMAD4 is important for the translocation</p>
Function :	<p>disease:Defects in SMAD2 are found in sporadic cases of colorectal carcinoma.,function:Transcriptional modulator activated by TGF-beta and activin type 1 receptor kinase. SMAD2 is a receptor-regulated SMAD (R-SMAD). May act as a tumor suppressor in colorectal carcinoma.,PTM:Acetylated on Lys-19 by coactivators in response to TGF-beta signaling, which increases transcriptional activity. Isoform short: Acetylation increases DNA binding activity in vitro and enhances its association with target promoters in vivo.,PTM:In response to TGF-beta, ubiquitinated by NEDD4L; which promotes its degradation.,PTM:Phosphorylated on one or several of Thr-220, Ser-245, Ser-250, and Ser-255. In response to TGF-beta, phosphorylated on Ser-465/467 by TGF-beta and activin type 1 receptor kinases. Able to interact with SMURF2 when phosphorylated on Ser-465/467, recruiting other proteins, such as SNON, for degr</p>
Subcellular	Cytoplasm . Nucleus . Cytoplasmic and nuclear in the absence of TGF-beta. On TGF-beta stimulation, migrates to the nucleus when complexed with SMAD4

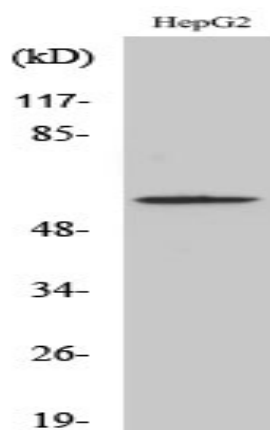
Location : (PubMed:9865696, PubMed:21145499). On dephosphorylation by phosphatase PPM1A, released from the SMAD2/SMAD4 complex, and exported out of the nucleus by interaction with RANBP1 (PubMed:16751101, PubMed:19289081). Localized mainly to the nucleus in the early stages of embryo development with expression becoming evident in the cytoplasm at the blastocyst and epiblast stages (By similarity). .

Expression : Expressed at high levels in skeletal muscle, endothelial cells, heart and placenta.

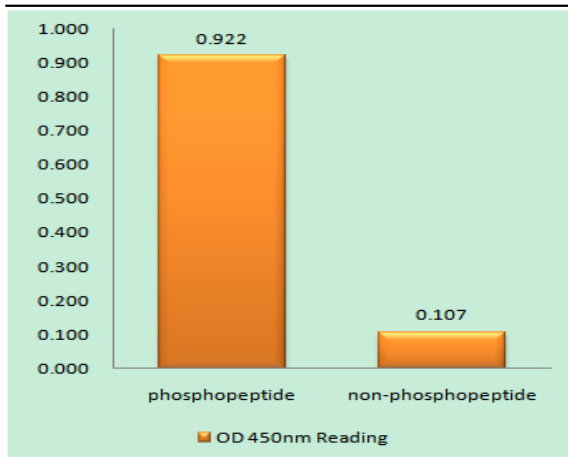
Products Images



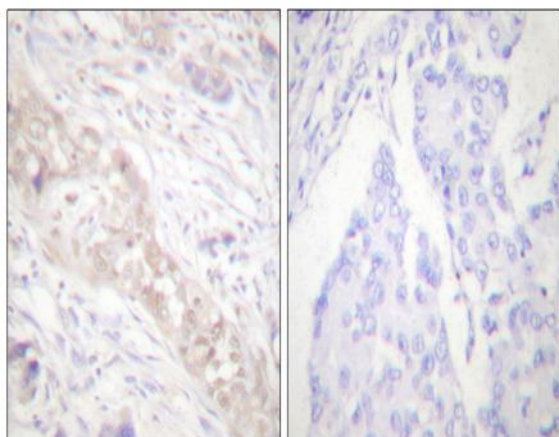
Western Blot analysis of various cells using Phospho-Smad2 (S467) Polyclonal Antibody diluted at 1:500



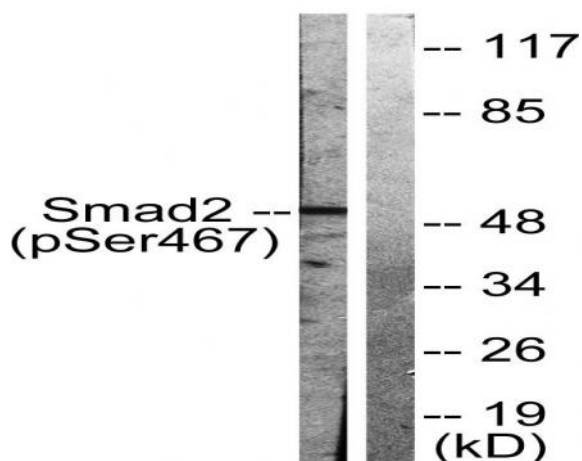
Western Blot analysis of HepG2 cells using Phospho-Smad2 (S467) Polyclonal Antibody diluted at 1:500



Enzyme-Linked Immunosorbent Assay (Phospho-ELISA) for Immunogen Phosphopeptide (Phospho-left) and Non-Phosphopeptide (Phospho-right), using Smad2 (Phospho-Ser467) Antibody



Immunohistochemistry analysis of paraffin-embedded human breast carcinoma, using Smad2 (Phospho-Ser467) Antibody. The picture on the right is blocked with the phospho peptide.



Western blot analysis of lysates from HepG2 cells treated with PMA 125ng/ml 15', using Smad2 (Phospho-Ser467) Antibody. The lane on the right is blocked with the phospho peptide.