

A1ATR Polyclonal Antibody

Catalog No :	YN0433
Reactivity :	Human
Applications :	WB;ELISA
Target :	A1ATR
Gene Name :	SERPINA2 ARG5 ATR PIL
Protein Name :	Putative alpha-1-antitrypsin-related protein (Serp1n A2)
Human Swiss Prot No :	P20848
Immunogen :	Synthesized peptide derived from human protein . at AA range: 110-190
Specificity :	A1ATR Polyclonal Antibody detects endogenous levels of protein.
Formulation :	Liquid in PBS containing 50% glycerol, and 0.02% sodium azide.
Source :	Polyclonal, Rabbit,IgG
Dilution :	WB 1:500-2000 ELISA 1:5000-20000
Purification :	The antibody was affinity-purified from rabbit antiserum by affinity-chromatography using epitope-specific immunogen.
Concentration :	1 mg/ml
Storage Stability :	-15°C to -25°C/1 year(Do not lower than -25°C)
Observed Band :	46kD
Background :	This gene encodes a member of the serpin family of proteins, a group of proteins that inhibit serine proteases. The encoded intracellular glycoprotein is localized at the endoplasmic reticulum. This gene is a polymorphic pseudogene, with the non-functional allele being predominant in some populations. Some individuals, as represented by the reference genome allele, contain a 2kb coding region deletion

and a start code mutation. [provided by RefSeq, Feb 2014],

Function :

caution:Could be the product of a pseudogene.,domain:The reactive center loop (RCL) extends out from the body of the protein and directs binding to the target protease. The protease cleaves the serpin at the reactive site within the RCL, establishing a covalent linkage between the carboxyl group of the serpin reactive site and the serine hydroxyl of the protease. The resulting inactive serpin-protease complex is highly stable.,function:Could be a serine protease inhibitor.,similarity:Belongs to the serpin family.,

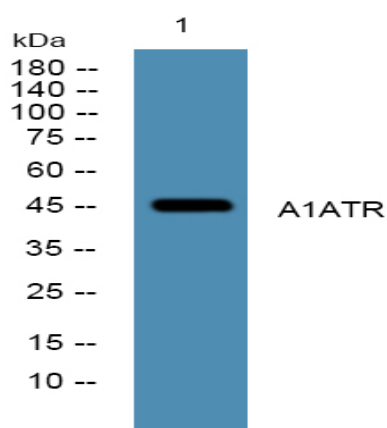
Subcellular Location :

Endoplasmic reticulum .

Expression :

Expressed in the liver, leukocytes and testis. Also detected in brain, colon, uterus, esophagus, spleen, trachea, kidney and lung.

Products Images



Western blot analysis of lysates from A431 cells, primary antibody was diluted at 1:1000, 4° over night