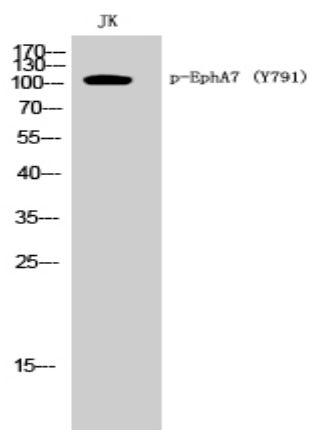


EphA7 (phospho Tyr791) Polyclonal Antibody

Catalog No :	YP0508
Reactivity :	Human;Mouse;Rat
Applications :	WB;ELISA
Target :	EPHA7
Fields :	>>Axon guidance
Gene Name :	EPHA7
Protein Name :	Ephrin type-A receptor 7
Human Gene Id :	2045
Human Swiss Prot No :	Q15375
Mouse Gene Id :	13841
Mouse Swiss Prot No :	Q61772
Rat Gene Id :	171287
Rat Swiss Prot No :	P54759
Immunogen :	Synthesized phospho-peptide around the phosphorylation site of human EphA7 (phospho Tyr791)
Specificity :	Phospho-EphA7 (Y791) Polyclonal Antibody detects endogenous levels of EphA7 protein only when phosphorylated at Y791.
Formulation :	Liquid in PBS containing 50% glycerol, 0.5% BSA and 0.02% sodium azide.
Source :	Polyclonal, Rabbit,IgG
Dilution :	WB 1:500 - 1:2000. ELISA: 1:10000. Not yet tested in other applications.

Purification :	The antibody was affinity-purified from rabbit antiserum by affinity-chromatography using epitope-specific immunogen.
Concentration :	1 mg/ml
Storage Stability :	-15°C to -25°C/1 year(Do not lower than -25°C)
Observed Band :	112kD
Cell Pathway :	Axon guidance;
Background :	This gene belongs to the ephrin receptor subfamily of the protein-tyrosine kinase family. EPH and EPH-related receptors have been implicated in mediating developmental events, particularly in the nervous system. Receptors in the EPH subfamily typically have a single kinase domain and an extracellular region containing a Cys-rich domain and 2 fibronectin type III repeats. The ephrin receptors are divided into 2 groups based on the similarity of their extracellular domain sequences and their affinities for binding ephrin-A and ephrin-B ligands. Increased expression of this gene is associated with multiple forms of carcinoma. Alternative splicing results in multiple transcript variants. [provided by RefSeq, Dec 2013],
Function :	catalytic activity:ATP + a [protein]-L-tyrosine = ADP + a [protein]-L-tyrosine phosphate.,function:Receptor for members of the ephrin-A family. Binds to ephrin-A1, -A2, -A3, -A4 and -A5.,similarity:Belongs to the protein kinase superfamily. Tyr protein kinase family. Ephrin receptor subfamily.,similarity:Contains 1 protein kinase domain.,similarity:Contains 1 SAM (sterile alpha motif) domain.,similarity:Contains 2 fibronectin type-III domains.,subunit:Interacts with PRKCABP and GRIP1.,tissue specificity:Widely expressed.,
Subcellular Location :	Cell membrane ; Single-pass type I membrane protein .
Expression :	Widely expressed.

Products Images



Western Blot analysis of JK cells using Phospho-EphA7 (Y791)
Polyclonal Antibody