

KIF20A (phospho Ser528) Polyclonal Antibody

Catalog No :	YP0373
Reactivity :	Human;Rat;Mouse;
Applications :	WB;IHC;IF;ELISA
Target :	KIF20A
Gene Name :	KIF20A
Protein Name :	Kinesin-like protein KIF20A
Human Gene Id :	10112
Human Swiss Prot No :	O95235
Mouse Swiss Prot No :	P97329
Immunogen :	The antiserum was produced against synthesized peptide derived from human KIF20A around the phosphorylation site of Ser528. AA range:501-550
Specificity :	Phospho-KIF20A (S528) Polyclonal Antibody detects endogenous levels of KIF20A protein only when phosphorylated at S528.
Formulation :	Liquid in PBS containing 50% glycerol, 0.5% BSA and 0.02% sodium azide.
Source :	Polyclonal, Rabbit,IgG
Dilution :	WB 1:500 - 1:2000. IHC 1:100 - 1:300. ELISA: 1:5000.. IF 1:50-200
Purification :	The antibody was affinity-purified from rabbit antiserum by affinity-chromatography using epitope-specific immunogen.
Concentration :	1 mg/ml
Storage Stability :	-15°C to -25°C/1 year(Do not lower than -25°C)
Observed Band :	100kD

Background :

function:Interacts with guanosine triphosphate (GTP)-bound forms of RAB6A and RAB6B. May act as a motor required for the retrograde RAB6 regulated transport of Golgi membranes and associated vesicles along microtubules. Has a microtubule plus end-directed motility.,similarity:Belongs to the kinesin-like protein family.,similarity:Contains 1 kinesin-motor domain.,

Function :

function:Interacts with guanosine triphosphate (GTP)-bound forms of RAB6A and RAB6B. May act as a motor required for the retrograde RAB6 regulated transport of Golgi membranes and associated vesicles along microtubules. Has a microtubule plus end-directed motility.,similarity:Belongs to the kinesin-like protein family.,similarity:Contains 1 kinesin-motor domain.,

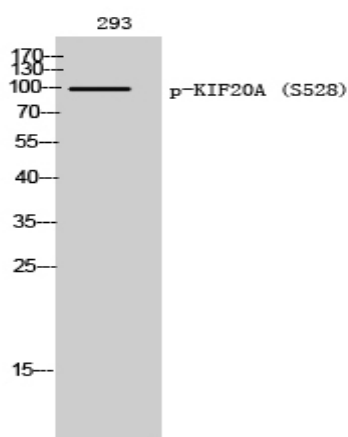
Subcellular Location :

Golgi apparatus . Cytoplasm, cytoskeleton, spindle . Localizes to the spindle midzone during anaphase and telophase. .

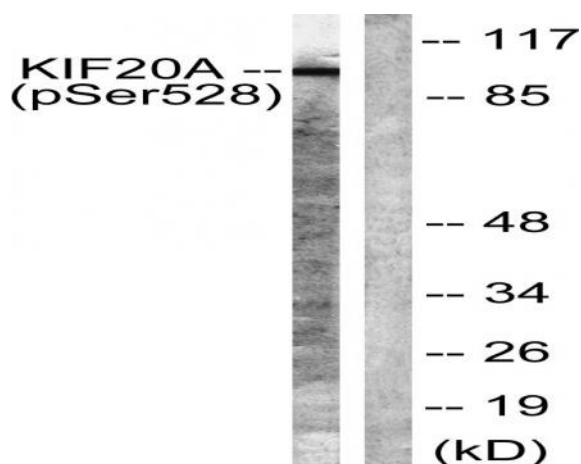
Expression :

Brain,Endothelial cell,Epithelium,Uterus,

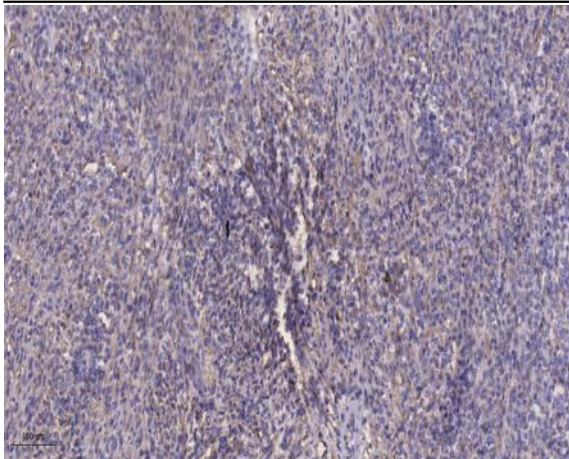
Products Images



Western Blot analysis of 293 cells using Phospho-KIF20A (S528) Polyclonal Antibody



Western blot analysis of lysates from 293 cells, using KIF20A (Phospho-Ser528) Antibody. The lane on the right is blocked with the phospho peptide.



Immunohistochemical analysis of paraffin-embedded human Colon cancer. 1, Antibody was diluted at 1:200(4° overnight). 2, Tris-EDTA,pH9.0 was used for antigen retrieval. 3,Secondary antibody was diluted at 1:200(room temperature, 45min).