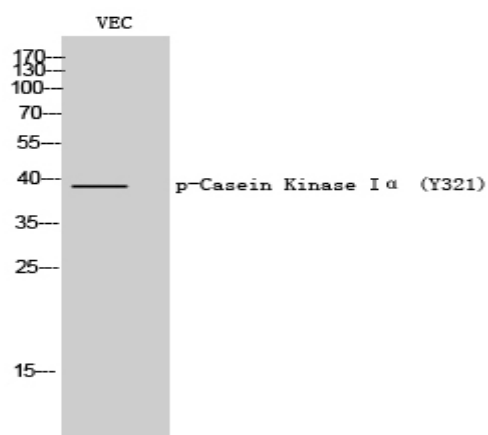


Casein Kinase Iα (phospho Thr321) Polyclonal Antibody

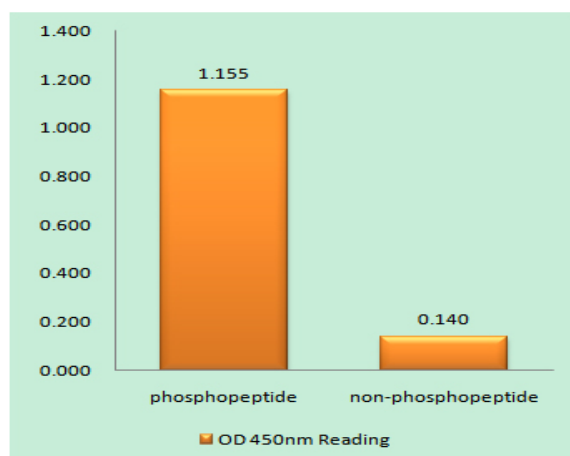
Catalog No :	YP0392
Reactivity :	Human;Mouse;Rat
Applications :	WB;IHC;IF;ELISA
Target :	Casein Kinase Iα
Fields :	>>Wnt signaling pathway;>>Hedgehog signaling pathway;>>Alzheimer disease;>>Pathways of neurodegeneration - multiple diseases;>>Human papillomavirus infection;>>Breast cancer;>>Hepatocellular carcinoma;>>Gastric cancer
Gene Name :	CSNK1A1
Protein Name :	Casein kinase I isoform alpha
Human Gene Id :	1452
Human Swiss Prot No :	P48729
Mouse Swiss Prot No :	Q8BK63
Rat Gene Id :	113927
Rat Swiss Prot No :	P97633
Immunogen :	The antiserum was produced against synthesized peptide derived from human Casein Kinase I alpha around the phosphorylation site of Tyr321. AA range:287-336
Specificity :	Phospho-Casein Kinase Iα (Y321) Polyclonal Antibody detects endogenous levels of Casein Kinase Iα protein only when phosphorylated at Y321.
Formulation :	Liquid in PBS containing 50% glycerol, 0.5% BSA and 0.02% sodium azide.
Source :	Polyclonal, Rabbit,IgG

Dilution :	WB 1:500 - 1:2000. IHC 1:100 - 1:300. ELISA: 1:5000.. IF 1:50-200
Purification :	The antibody was affinity-purified from rabbit antiserum by affinity-chromatography using epitope-specific immunogen.
Concentration :	1 mg/ml
Storage Stability :	-15 °C to -25 °C/1 year(Do not lower than -25 °C)
Observed Band :	35kD
Cell Pathway :	WNT;WNT-T CELLHedgehog;
Background :	<p>catalytic activity:ATP + a protein = ADP + a phosphoprotein.,function:Casein kinases are operationally defined by their preferential utilization of acidic proteins such as caseins as substrates. It can phosphorylate a large number of proteins. Participates in Wnt signaling. Phosphorylates CTNNB1 on 'Ser-45'. ,similarity:Belongs to the protein kinase superfamily.,similarity:Belongs to the protein kinase superfamily. CK1 Ser/Thr protein kinase family. Casein kinase I subfamily.,similarity:Contains 1 protein kinase domain.,subunit:Monomer. Interacts with the Axin complex.,</p>
Function :	<p>catalytic activity:ATP + a protein = ADP + a phosphoprotein.,function:Casein kinases are operationally defined by their preferential utilization of acidic proteins such as caseins as substrates. It can phosphorylate a large number of proteins. Participates in Wnt signaling. Phosphorylates CTNNB1 on 'Ser-45'. ,similarity:Belongs to the protein kinase superfamily.,similarity:Belongs to the protein kinase superfamily. CK1 Ser/Thr protein kinase family. Casein kinase I subfamily.,similarity:Contains 1 protein kinase domain.,subunit:Monomer. Interacts with the Axin complex.,</p>
Subcellular Location :	<p>Cytoplasm . Cytoplasm, cytoskeleton, microtubule organizing center, centrosome . Chromosome, centromere, kinetochore . Nucleus speckle . Cytoplasm, cytoskeleton, cilium basal body . Cytoplasm, cytoskeleton, spindle . Localizes to the centrosome in interphase cells, and to kinetochore fibers during mitosis. Also recruited to the keratin cytoskeleton (PubMed:23902688) . .</p>
Expression :	Brain,Epithelium,Liver,Lung,Placenta,Skin,

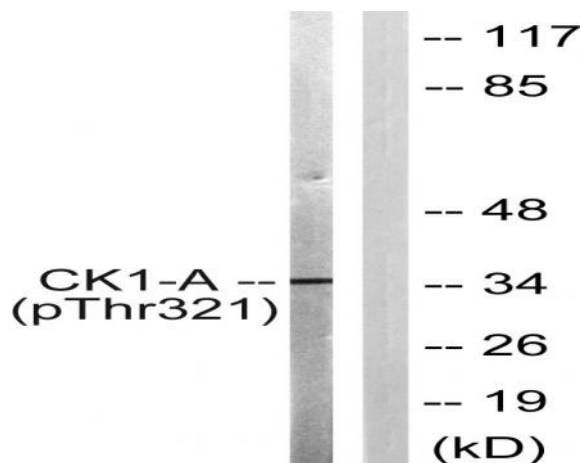
Products Images



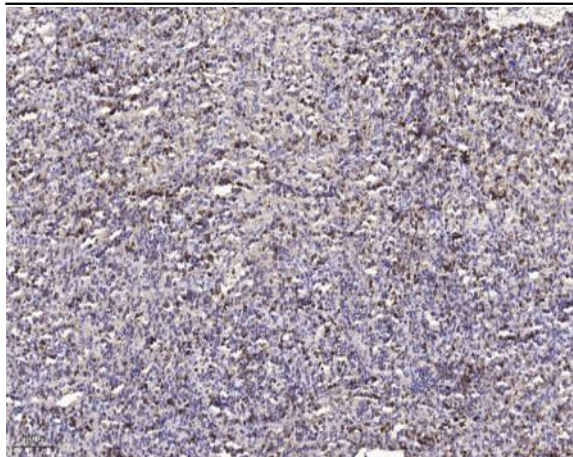
Western Blot analysis of VEC cells using Phospho-Casein Kinase Iα (Y321) Polyclonal Antibody



Enzyme-Linked Immunosorbent Assay (Phospho-ELISA) for Immunogen Phosphopeptide (Phospho-left) and Non-Phosphopeptide (Phospho-right), using Casein Kinase I alpha (Phospho-Tyr321) Antibody



Western blot analysis of lysates from HUVEC cells, using Casein Kinase I alpha (Phospho-Tyr321) Antibody. The lane on the right is blocked with the phospho peptide.



Immunohistochemical analysis of paraffin-embedded human spleen tissue. 1,primary Antibody was diluted at 1:200(4° overnight). 2, Sodium citrate pH 6.0 was used for antigen retrieval(>98 °C,20min). 3,Secondary antibody was diluted at 1:200