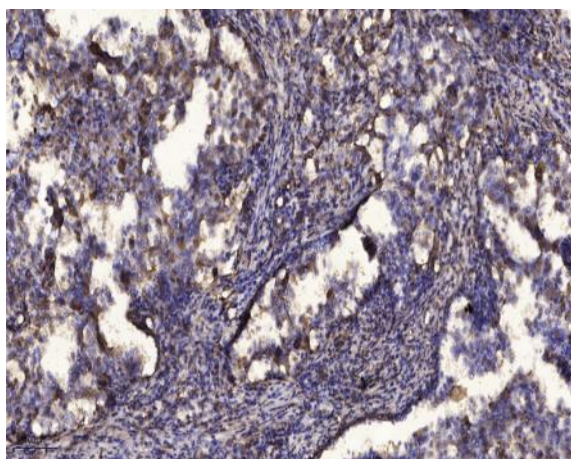


SIAT6 rabbit pAb

Catalog No :	YT7986
Reactivity :	Human;Mouse;Rat
Applications :	WB;ELISA;IHC
Target :	SIAT6
Fields :	>>Various types of N-glycan biosynthesis;>>Other types of O-glycan biosynthesis;>>Mannose type O-glycan biosynthesis;>>Glycosaminoglycan biosynthesis - keratan sulfate;>>Glycosphingolipid biosynthesis - lacto and neolacto series;>>Metabolic pathways
Gene Name :	ST3GAL3 SIAT6
Protein Name :	SIAT6
Human Gene Id :	6487
Human Swiss Prot No :	Q11203
Mouse Gene Id :	20441
Mouse Swiss Prot No :	P97325
Rat Gene Id :	64445
Rat Swiss Prot No :	Q02734
Immunogen :	Synthesized peptide derived from human SIAT6
Specificity :	This antibody detects endogenous levels of Human,Mouse,Rat SIAT6
Formulation :	Liquid in PBS containing 50% glycerol, 0.5% BSA and 0.02% sodium azide.
Source :	Polyclonal, Rabbit,IgG
Dilution :	WB 1:500-2000;IHC 1:50-300; ELISA 2000-20000

Purification :	The antibody was affinity-purified from rabbit antiserum by affinity-chromatography using epitope-specific immunogen.
Concentration :	1 mg/ml
Storage Stability :	-15°C to -25°C/1 year(Do not lower than -25°C)
Molecularweight :	41kD
Subcellular Location :	Golgi apparatus, Golgi stack membrane; Single-pass type II membrane protein. Secreted. Membrane-bound form in trans cisternae of Golgi. Secreted into the body fluid.
Expression :	Highly expressed in adult skeletal muscle and in all fetal tissues examined and to a much lesser extent in placenta, lung and liver.

Products Images



Immunohistochemical analysis of paraffin-embedded human Squamous cell carcinoma of lung. 1, Antibody was diluted at 1:200(4° overnight). 2, Tris-EDTA,pH9.0 was used for antigen retrieval. 3,Secondary antibody was diluted at 1:200(room temperature, 45min).