

CECR9 rabbit pAb

Catalog No :	YT7730
Reactivity :	Human;Rat;Mouse;
Applications :	WB
Target :	CECR9
Gene Name :	CECR9
Protein Name :	CECR9
Human Swiss Prot No :	P0C854
Immunogen :	Synthesized peptide derived from human CECR9 AA range: 69-119
Specificity :	This antibody detects endogenous levels of CECR9 at Human
Formulation :	Liquid in PBS containing 50% glycerol, 0.5% BSA and 0.02% sodium azide.
Source :	Polyclonal, Rabbit,IgG
Dilution :	WB 1:500-2000
Purification :	The antibody was affinity-purified from rabbit antiserum by affinity-chromatography using epitope-specific immunogen.
Concentration :	1 mg/ml
Storage Stability :	-15°C to -25°C/1 year(Do not lower than -25°C)
Molecularweight :	24kD
Function :	caution:Product of a dubious gene prediction.,miscellaneous:Candidate gene for the Cat Eye Syndrome (CES), a developmental disorder associated with the duplication of a 2 Mb region of 22q11.2. Duplication usually takes in the form of a supernumerary bisatellited isodicentric chromosome, resulting in four copies of the region (represents an inv dup(22)(q11)). CES is characterized clinically by the

combination of coloboma of the iris and anal atresia with fistula, downslanting palpebral fissures, preauricular tags and/or pits, frequent occurrence of heart and renal malformations, and normal or near-normal mental development.,tissue specificity:Ubiquitously expressed with higher expression in heart.,

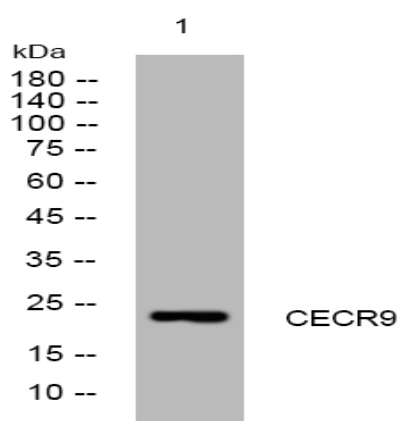
Subcellular Location :

Secreted .

Expression :

Ubiquitously expressed with higher expression in heart.

Products Images



Western blot analysis of lysates from SH-SY5Y cells, primary antibody was diluted at 1:1000, 4° over night