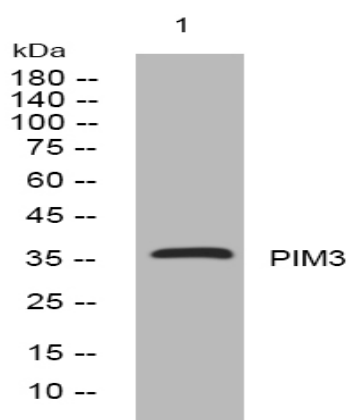


PIM3 rabbit pAb

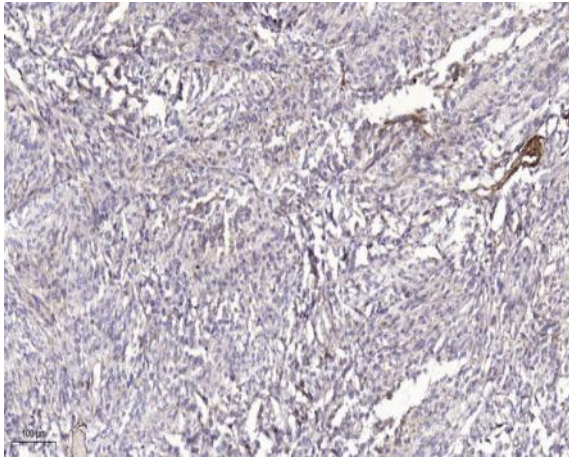
Catalog No :	YT7716
Reactivity :	Human;Mouse;Rat
Applications :	WB;IHC
Target :	PIM3
Gene Name :	PIM3
Protein Name :	PIM3
Human Gene Id :	415116
Human Swiss Prot No :	Q86V86
Mouse Gene Id :	223775
Mouse Swiss Prot No :	P58750
Rat Gene Id :	64534
Rat Swiss Prot No :	O70444
Immunogen :	Synthesized peptide derived from human PIM3 AA range: 102-152
Specificity :	This antibody detects endogenous levels of PIM3 at Human/Mouse/Rat
Formulation :	Liquid in PBS containing 50% glycerol, 0.5% BSA and 0.02% sodium azide.
Source :	Polyclonal, Rabbit,IgG
Dilution :	WB 1:500-2000;IHC 1:50-300
Purification :	The antibody was affinity-purified from rabbit antiserum by affinity-chromatography using epitope-specific immunogen.

Concentration :	1 mg/ml
Storage Stability :	-15°C to -25°C/1 year(Do not lower than -25°C)
Molecularweight :	36kD
Background :	The protein encoded by this gene belongs to the Ser/Thr protein kinase family, and PIM subfamily. This gene is overexpressed in hematological and epithelial tumors and is associated with MYC coexpression. It plays a role in the regulation of signal transduction cascades, contributing to both cell proliferation and survival, and provides a selective advantage in tumorigenesis. [provided by RefSeq, Jun 2012],
Function :	catalytic activity:ATP + a protein = ADP + a phosphoprotein.,function:May be involved in cell cycle progression and anti-apoptosis process. Implicated in proliferation of human hepatoma cell lines.,similarity:Belongs to the protein kinase superfamily. CAMK Ser/Thr protein kinase family. PIM subfamily.,similarity:Contains 1 protein kinase domain.,tissue specificity:Widely expressed. No expression in colon, thymus, and small intestine. Expressed in human hepatoma cell lines but not in normal liver tissues.,
Subcellular Location :	Cytoplasm .
Expression :	Detected in various tissues, including the heart, brain, lung, kidney, spleen, placenta, skeletal muscle, and peripheral blood leukocytes. Not found or barely expressed in the normal adult endoderm-derived organs such as colon, thymus, liver, or small intestine. However, expression is augmented in premalignant and malignant lesions of these organs.

Products Images



Western blot analysis of lysates from HeLa cells, primary antibody was diluted at 1:1000, 4° over night



Immunohistochemical analysis of paraffin-embedded human Colon cancer. 1, Antibody was diluted at 1:200(4° overnight). 2, Tris-EDTA,pH9.0 was used for antigen retrieval. 3,Secondary antibody was diluted at 1:200(room temperature, 45min).