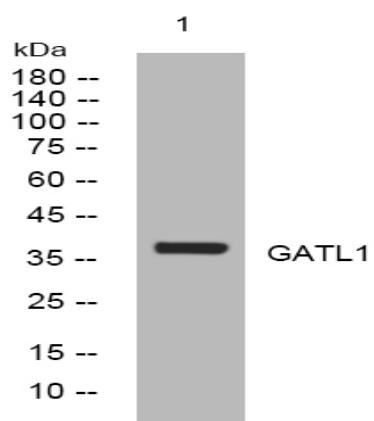


GATL1 rabbit pAb

Catalog No :	YT7707
Reactivity :	Human;Rat;Mouse;
Applications :	WB
Target :	GATL1
Gene Name :	GATSL1
Protein Name :	GATL1
Human Gene Id :	389523
Human Swiss Prot No :	A6NNH0
Immunogen :	Synthesized peptide derived from human GATL1 AA range: 104-154
Specificity :	This antibody detects endogenous levels of GATL1 at Human
Formulation :	Liquid in PBS containing 50% glycerol, 0.5% BSA and 0.02% sodium azide.
Source :	Polyclonal, Rabbit,IgG
Dilution :	WB 1:500-2000
Purification :	The antibody was affinity-purified from rabbit antiserum by affinity-chromatography using epitope-specific immunogen.
Concentration :	1 mg/ml
Storage Stability :	-15°C to -25°C/1 year(Do not lower than -25°C)
Molecularweight :	36kD

Products Images



Western blot analysis of lysates from HuvEc cells, primary antibody was diluted at 1:1000, 4° over night