

## CBWD1 rabbit pAb

<b>Catalog No :</b>	YT7622
<b>Reactivity :</b>	Human;Mouse;Rat
<b>Applications :</b>	WB
<b>Target :</b>	CBWD1
<b>Gene Name :</b>	CBWD1
<b>Protein Name :</b>	CBWD1
<b>Human Gene Id :</b>	55871
<b>Human Swiss Prot No :</b>	Q9BRT8
<b>Mouse Gene Id :</b>	226043
<b>Mouse Swiss Prot No :</b>	Q8VEH6
<b>Rat Gene Id :</b>	171057
<b>Rat Swiss Prot No :</b>	Q99MB4
<b>Immunogen :</b>	Synthesized peptide derived from human CBWD1 AA range: 61-111
<b>Specificity :</b>	This antibody detects endogenous levels of CBWD1 at Human/Mouse/Rat
<b>Formulation :</b>	Liquid in PBS containing 50% glycerol, 0.5% BSA and 0.02% sodium azide.
<b>Source :</b>	Polyclonal, Rabbit,IgG
<b>Dilution :</b>	WB 1:500-2000
<b>Purification :</b>	The antibody was affinity-purified from rabbit antiserum by affinity-chromatography using epitope-specific immunogen.

**Concentration :** 1 mg/ml

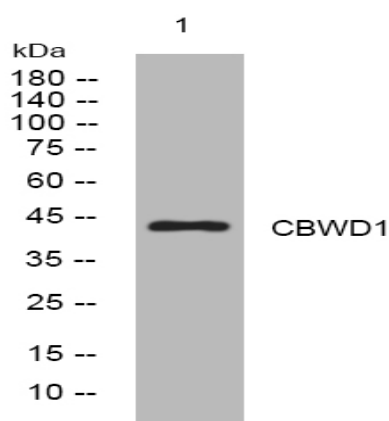
**Storage Stability :** -15°C to -25°C/1 year(Do not lower than -25°C)

**Molecularweight :** 43kD

**Function :** induction:Increased expression in response to dopamine treatment.,similarity:Belongs to the cobW family.,similarity:Contains 1 cobW C-terminal domain.,tissue specificity:Ubiquitously expressed. Up-regulated in cultured astrocytes treated with dopamine.,

**Expression :** Ubiquitously expressed. Up-regulated in cultured astrocytes treated with dopamine.

## Products Images



Western blot analysis of lysates from 293T cells, primary antibody was diluted at 1:1000, 4° over night