

TBCD5 rabbit pAb

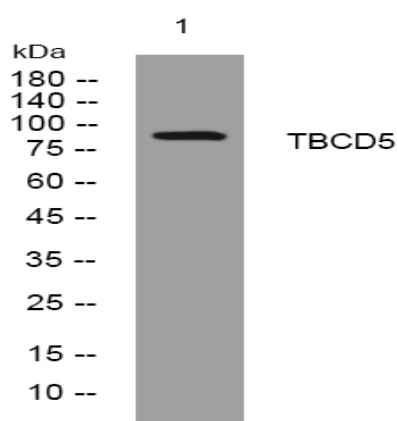
| | |
|------------------------------|---|
| Catalog No : | YT7621 |
| Reactivity : | Human;Mouse |
| Applications : | WB |
| Target : | TBCD5 |
| Gene Name : | TBC1D5 KIAA0210 |
| Protein Name : | TBCD5 |
| Human Gene Id : | 9779 |
| Human Swiss Prot No : | Q92609 |
| Mouse Gene Id : | 72238 |
| Mouse Swiss Prot No : | Q80XQ2 |
| Immunogen : | Synthesized peptide derived from human TBCD5 AA range: 148-198 |
| Specificity : | This antibody detects endogenous levels of TBCD5 at Human/Mouse |
| Formulation : | Liquid in PBS containing 50% glycerol, 0.5% BSA and 0.02% sodium azide. |
| Source : | Polyclonal, Rabbit,IgG |
| Dilution : | WB 1:500-2000 |
| Purification : | The antibody was affinity-purified from rabbit antiserum by affinity-chromatography using epitope-specific immunogen. |
| Concentration : | 1 mg/ml |
| Storage Stability : | -15°C to -25°C/1 year(Do not lower than -25°C) |

Molecularweight : 87kD

Function : function:May act as a GTPase-activating protein for Rab family protein(s).,similarity:Contains 1 Rab-GAP TBC domain.,

Subcellular Location : Endosome membrane . Cytoplasmic vesicle, autophagosome . During starvation induced autophagy is relocalized from endosomal localization to LC3-positive autophagosomes. .

Products Images



Western blot analysis of lysates from MCF-7 cells, primary antibody was diluted at 1:1000, 4° over night