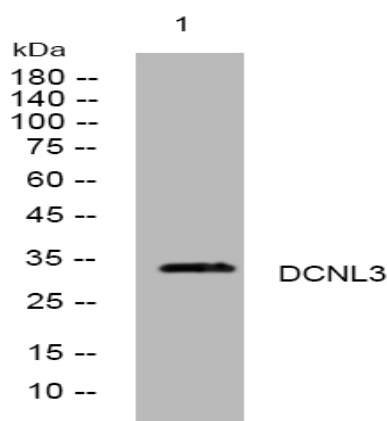


## DCNL3 rabbit pAb

<b>Catalog No :</b>	YT7767
<b>Reactivity :</b>	Human;Mouse;Rat
<b>Applications :</b>	WB
<b>Target :</b>	DCNL3
<b>Gene Name :</b>	DCUN1D3
<b>Protein Name :</b>	DCNL3
<b>Human Gene Id :</b>	123879
<b>Human Swiss Prot No :</b>	Q8IWE4
<b>Mouse Gene Id :</b>	233805
<b>Mouse Swiss Prot No :</b>	Q8K0V2
<b>Rat Gene Id :</b>	309035
<b>Rat Swiss Prot No :</b>	Q4V8B2
<b>Immunogen :</b>	Synthesized peptide derived from human DCNL3 AA range: 205-255
<b>Specificity :</b>	This antibody detects endogenous levels of DCNL3 at Human/Mouse/Rat
<b>Formulation :</b>	Liquid in PBS containing 50% glycerol, 0.5% BSA and 0.02% sodium azide.
<b>Source :</b>	Polyclonal, Rabbit,IgG
<b>Dilution :</b>	WB 1:500-2000
<b>Purification :</b>	The antibody was affinity-purified from rabbit antiserum by affinity-chromatography using epitope-specific immunogen.

<b>Concentration :</b>	1 mg/ml
<b>Storage Stability :</b>	-15°C to -25°C/1 year(Do not lower than -25°C)
<b>Molecularweight :</b>	33kD
<b>Function :</b>	similarity:Contains 1 DCUN1 domain.,
<b>Subcellular Location :</b>	Cell membrane . Cytoplasm . Nucleus . Cytoplasm, perinuclear region . After UVC treatment, the protein enters to the nucleus gradually (PubMed:18823379). Cell membrane localization is essential for CUL3 neddylation (PubMed:19617556). .
<b>Expression :</b>	Tends to be down-regulated in different type of cancers, including lung neuroendocrine carcinoma, thyroid Huerthle cell carcinoma and lung squamous cell carcinoma (PubMed:25349211). Mostly expressed in testis and brain (PubMed:26906416). Highly expressed in liver, bladder and renal normal tissue than their tumor tissue counterparts (PubMed:18823379). Palmitoylation stabilizes DCUN1D3 at the cell membrane (PubMed:19617556).

## Products Images



Western blot analysis of lysates from HpeG2 cells, primary antibody was diluted at 1:1000, 4° over night