

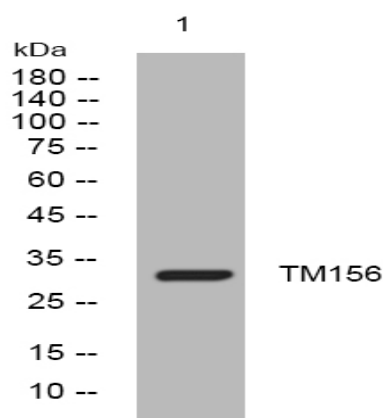
TM156 rabbit pAb

Catalog No :	YT7613
Reactivity :	Human;Rat
Applications :	WB;IHC
Target :	TM156
Gene Name :	TMEM156
Protein Name :	TM156
Human Gene Id :	80008
Human Swiss Prot No :	Q8N614
Rat Gene Id :	498365
Rat Swiss Prot No :	Q5BK38
Immunogen :	Synthesized peptide derived from human TM156 AA range: 33-83
Specificity :	This antibody detects endogenous levels of TM156 at Human/Rat
Formulation :	Liquid in PBS containing 50% glycerol, 0.5% BSA and 0.02% sodium azide.
Source :	Polyclonal, Rabbit,IgG
Dilution :	WB 1:500-2000;IHC 1:50-300
Purification :	The antibody was affinity-purified from rabbit antiserum by affinity-chromatography using epitope-specific immunogen.
Concentration :	1 mg/ml
Storage Stability :	-15°C to -25°C/1 year(Do not lower than -25°C)

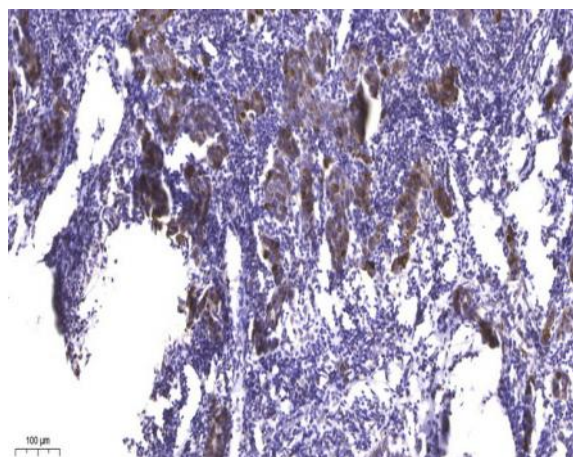
Molecularweight : 33kD

Subcellular Location : Membrane ; Multi-pass membrane protein .

Products Images



Western blot analysis of lysates from THP-1 cells, primary antibody was diluted at 1:1000, 4° over night



Immunohistochemical analysis of paraffin-embedded human Breast cancer. 1, Antibody was diluted at 1:200(4° overnight). 2, Tris-EDTA,pH9.0 was used for antigen retrieval. 3,Secondary antibody was diluted at 1:200(room temperature, 45min).