

ZMIZ2 rabbit pAb

Catalog No :	YT7293
Reactivity :	Human;Mouse
Applications :	WB
Target :	ZMIZ2
Gene Name :	ZMIZ2 KIAA1886 ZIMP7 HRIHFB2007
Protein Name :	ZMIZ2
Human Gene Id :	83637
Human Swiss Prot No :	Q8NF64
Mouse Gene Id :	52915
Mouse Swiss Prot No :	Q8CIE2
Immunogen :	Synthesized peptide derived from human ZMIZ2 AA range: 512-562
Specificity :	This antibody detects endogenous levels of ZMIZ2 at Human/Mouse
Formulation :	Liquid in PBS containing 50% glycerol, 0.5% BSA and 0.02% sodium azide.
Source :	Polyclonal, Rabbit,IgG
Dilution :	WB 1:500-2000
Purification :	The antibody was affinity-purified from rabbit antiserum by affinity-chromatography using epitope-specific immunogen.
Concentration :	1 mg/ml
Storage Stability :	-15°C to -25°C/1 year(Do not lower than -25°C)

Molecularweight : 101kD

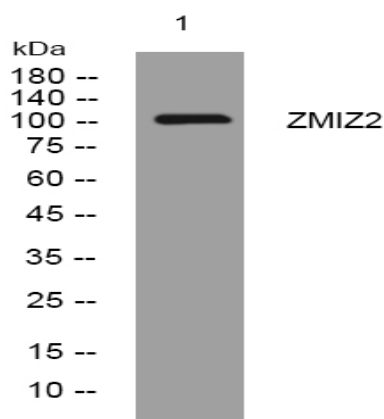
Background : ZMIZ2 and ZMIZ1 (MIM 607159) are members of a PIAS (see MIM 603566)-like family of proteins that interact with nuclear hormone receptors. ZMIZ2 interacts with androgen receptor (AR; MIM 313700) and enhances AR-mediated transcription (Huang et al., 2005 [PubMed 16051670]).[supplied by OMIM, May 2010],

Function : domain:The C-terminal proline-rich domain possesses a significant intrinsic transcriptional activity. This activity is inhibited by the N-terminus in the full-length protein.,function:Increases ligand-dependent transcriptional activity of AR and other nuclear hormone receptors.,similarity:Contains 1 SP-RING-type zinc finger.,subcellular location:Detected at replication foci throughout S phase.,subunit:Interacts with AR, SMARCA4/BRG1 and SMARCE1/BAF57. Interaction with either SMARCA4 and SMARCE1 enhances AR-mediated transcription.,tissue specificity:Expressed most abundantly in testis with lower levels in heart, brain, pancreas, prostate and ovary.,

Subcellular Location : Nucleus . Detected at replication foci throughout S phase.

Expression : Expressed most abundantly in testis with lower levels in heart, brain, pancreas, prostate and ovary.

Products Images



Western blot analysis of lysates from VEC cells, primary antibody was diluted at 1:1000, 4° over night