

NH2L1 rabbit pAb

Catalog No :	YT7070
Reactivity :	Human;Mouse;Rat
Applications :	WB
Target :	NH2L1
Fields :	>>Ribosome biogenesis in eukaryotes;>>Spliceosome
Gene Name :	NHP2L1
Protein Name :	NH2L1
Human Gene Id :	4809
Human Swiss Prot No :	P55769
Mouse Gene Id :	100862468
Mouse Swiss Prot No :	Q9D0T1
Rat Gene Id :	100359574
Rat Swiss Prot No :	P55770
Immunogen :	Synthesized peptide derived from human NH2L1 AA range: 33-83
Specificity :	This antibody detects endogenous levels of NH2L1 at Human/Mouse/Rat
Formulation :	Liquid in PBS containing 50% glycerol, 0.5% BSA and 0.02% sodium azide.
Source :	Polyclonal, Rabbit,IgG
Dilution :	WB 1:500-2000
Purification :	The antibody was affinity-purified from rabbit antiserum by affinity-

chromatography using epitope-specific immunogen.

Concentration : 1 mg/ml

Storage Stability : -15°C to -25°C/1 year (Do not lower than -25°C)

Molecularweight : 14kD

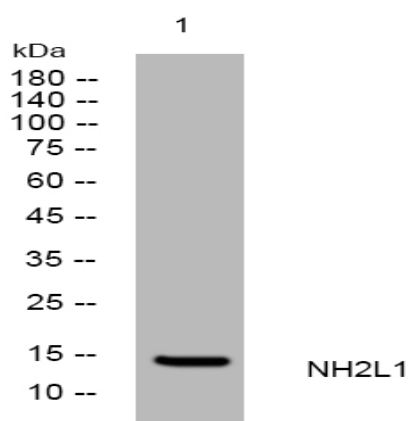
Background : Originally named because of its sequence similarity to the *Saccharomyces cerevisiae* NHP2 (non-histone protein 2), this protein appears to be a highly conserved nuclear protein that is a component of the [U4/U6.U5] tri-snRNP. It binds to the 5' stem-loop of U4 snRNA. Two transcript variants encoding the same protein have been found for this gene. [provided by RefSeq, Jul 2008],

Function : function: Binds to the 5'-stem-loop of U4 snRNA and may play a role in the late stage of spliceosome assembly. The protein undergoes a conformational change upon RNA-binding., similarity: Belongs to the ribosomal protein L7Ae family., subcellular location: Concentrated in the dense fibrillar component of the nucleolus., subunit: Interacts with RAD17., tissue specificity: Ubiquitous.,

Subcellular Location : Nucleus . Nucleus, nucleolus . Concentrated in the dense fibrillar component of the nucleolus. .

Expression : Ubiquitous.

Products Images



Western blot analysis of lysates from A549 cells, primary antibody was diluted at 1:1000, 4°C over night