

RS10 Polyclonal Antibody

Catalog No :	YN0363
Reactivity :	Human;Mouse;Rat
Applications :	WB;ELISA
Target :	RS10
Fields :	>>Ribosome;>>Coronavirus disease - COVID-19
Gene Name :	RPS10
Protein Name :	40S ribosomal protein S10
Human Gene Id :	6204
Human Swiss Prot No :	P46783
Mouse Swiss Prot No :	P63325
Rat Swiss Prot No :	P63326
Immunogen :	Synthesized peptide derived from human protein . at AA range: 40-120
Specificity :	RS10 Polyclonal Antibody detects endogenous levels of protein.
Formulation :	Liquid in PBS containing 50% glycerol, and 0.02% sodium azide.
Source :	Polyclonal, Rabbit,IgG
Dilution :	WB 1:500-2000 ELISA 1:5000-20000
Purification :	The antibody was affinity-purified from rabbit antiserum by affinity-chromatography using epitope-specific immunogen.
Concentration :	1 mg/ml

Storage Stability : -15 °C to -25 °C/1 year(Do not lower than -25 °C)

Observed Band : 18kD

Cell Pathway : Ribosome;

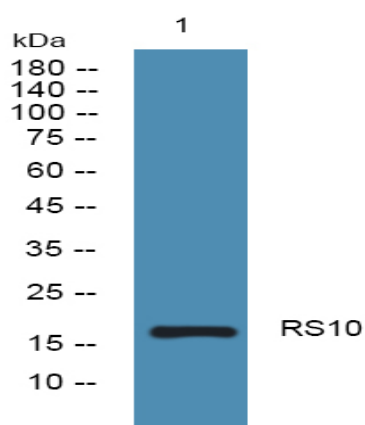
Background : Ribosomes, the organelles that catalyze protein synthesis, consist of a small 40S subunit and a large 60S subunit. Together these subunits are composed of 4 RNA species and approximately 80 structurally distinct proteins. This gene encodes a ribosomal protein that is a component of the 40S subunit. The protein belongs to the S10E family of ribosomal proteins. It is located in the cytoplasm. Variable expression of this gene in colorectal cancers compared to adjacent normal tissues has been observed, although no correlation between the level of expression and the severity of the disease has been found. As is typical for genes encoding ribosomal proteins, there are multiple processed pseudogenes of this gene dispersed through the genome. Alternate splicing results in multiple transcript variants that encode the same protein. Naturally occurring read-through transcription occurs between this locus and t

Function : similarity:Belongs to the ribosomal protein S10e family.,

Subcellular Location : Cytoplasm . Nucleus, nucleolus . Localized in the granular component (GC) region of the nucleolus. Methylation is required for its localization in the GC region. Colocalizes with NPS1 in the GC region of the nucleolus.

Expression : Brain,Colon,Lymph,Placenta,Skin,

Products Images



Western blot analysis of lysates from HCT116 cells, primary antibody was diluted at 1:1000, 4° over night