

GM130 Polyclonal Antibody

Catalog No :	YT6291
Reactivity :	Human;Mouse;Rat
Applications :	WB;IHC;IF;ELISA
Target :	GM130
Gene Name :	GOLGA2
Protein Name :	GM130
Human Gene Id :	2801
Human Swiss Prot No :	Q08379
Immunogen :	Synthesized peptide derived from human GM130
Specificity :	This antibody detects endogenous levels of human GM130
Formulation :	Liquid in PBS containing 50% glycerol, 0.5% BSA and 0.02% sodium azide.
Source :	Polyclonal, Rabbit,IgG
Dilution :	WB 1:500 - 1:2000. ELISA: 1:10000.. IF 1:50-200
Purification :	The antibody was affinity-purified from rabbit antiserum by affinity-chromatography using epitope-specific immunogen.
Concentration :	1 mg/ml
Storage Stability :	-15°C to -25°C/1 year(Do not lower than -25°C)
Observed Band :	112-130kD
Background :	The Golgi apparatus, which participates in glycosylation and transport of proteins and lipids in the secretory pathway, consists of a series of stacked cisternae (flattened membrane sacs). Interactions between the Golgi and

microtubules are thought to be important for the reorganization of the Golgi after it fragments during mitosis. This gene encodes one of the golgins, a family of proteins localized to the Golgi. This encoded protein has been postulated to play roles in the stacking of Golgi cisternae and in vesicular transport. Several alternatively spliced transcript variants of this gene have been described, but the full-length nature of these variants has not been determined. [provided by RefSeq, Feb 2010],

Function :

domain:Extended rod-like protein with coiled-coil domains.,function:Golgi auto-antigen; probably involved in maintaining cis-Golgi structure.,sequence caution:Sequence differs from that shown after position 814 due to an internal deletion.,similarity:Belongs to the GOLGA2 family.,subunit:Part of a larger oligomeric complex. Interacts with p115 (By similarity). Interacts with RAB1B that has been activated by GTP-binding. Interacts with GORASP1/GRASP65 and ZFPL1.,

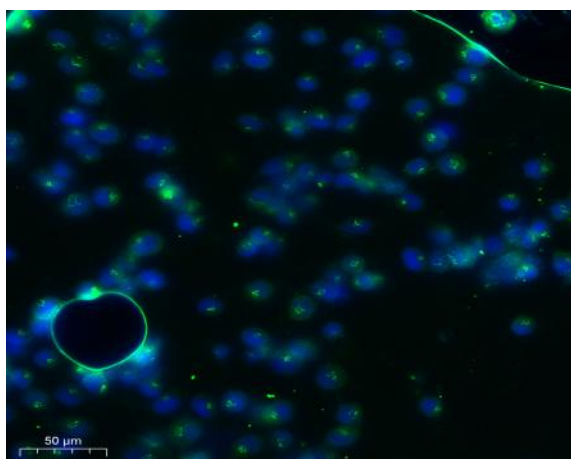
Subcellular Location :

Golgi apparatus, cis-Golgi network membrane ; Peripheral membrane protein ; Cytoplasmic side . Endoplasmic reticulum-Golgi intermediate compartment membrane ; Peripheral membrane protein ; Cytoplasmic side . Cytoplasm, cytoskeleton, spindle pole . Associates with the mitotic spindle during mitosis (PubMed:26165940). .

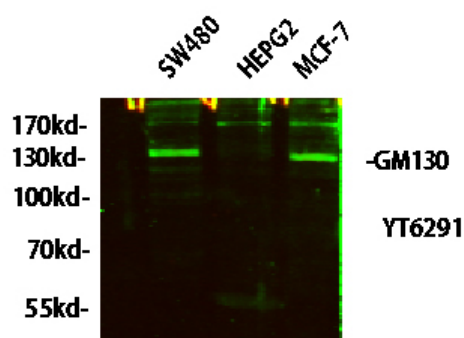
Expression :

Brain,Cervix,Colon
adenocarcinoma,Epithelium,Heart,Hepatocyte,Liver,Placenta,Thymus,

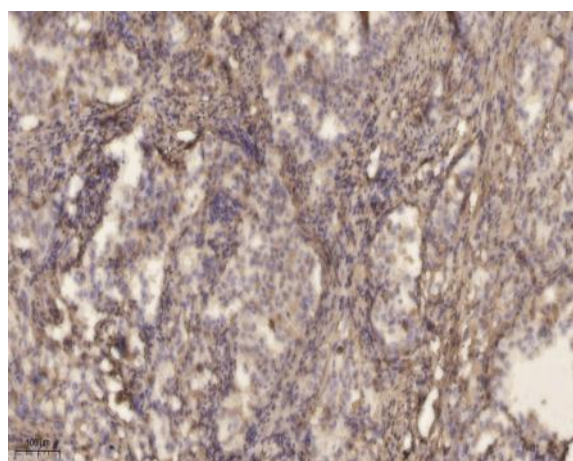
Products Images



Immunofluorescence analysis of SiHa cell. 1,primary Antibody was diluted at 1:100(4°C overnight). 2, Goat Anti Rabbit IgG (H&L) - AFuor 594 Secondary antibody(catalog No: RS3611) was diluted at 1:500(room temperature, 50min).



Western blot analysis of lysates from HT-29, NIH/3T3, and HepG2 cells, primary antibody was diluted at 1:1000, 4° over night, secondary antibody(cat: RS23920)was diluted at 1:10000, 37° 1 hour.



Immunohistochemical analysis of paraffin-embedded human lung cancer. 1, Antibody was diluted at 1:200(4° overnight). 2, Tris-EDTA,pH9.0 was used for antigen retrieval. 3,Secondary antibody was diluted at 1:200(room temperature, 45min).