

GNG4 Polyclonal Antibody

Catalog No :	YT6270
Reactivity :	Human;Mouse
Applications :	IHC;ELISA
Target :	GNG4
Fields :	>>Ras signaling pathway;>>Chemokine signaling pathway;>>PI3K-Akt signaling pathway;>>Apelin signaling pathway;>>Circadian entrainment;>>Retrograde endocannabinoid signaling;>>Glutamatergic synapse;>>Cholinergic synapse;>>Serotonergic synapse;>>GABAergic synapse;>>Dopaminergic synapse;>>Relaxin signaling pathway;>>Morphine addiction;>>Alcoholism;>>Human cytomegalovirus infection;>>Kaposi sarcoma-associated herpesvirus infection;>>Human immunodeficiency virus 1 infection;>>Pathways in cancer
Gene Name :	GNG4 GNGT4
Protein Name :	GNG4
Human Gene Id :	2786
Human Swiss Prot No :	P50150
Immunogen :	Synthesized peptide derived from human GNG4 AA range: 1-50
Specificity :	This antibody detects endogenous levels of human GNG4
Formulation :	Liquid in PBS containing 50% glycerol, 0.5% BSA and 0.02% sodium azide.
Source :	Polyclonal, Rabbit,IgG
Dilution :	IHC 1:50-200, ELISA(peptide)1:5000-20000
Purification :	The antibody was affinity-purified from rabbit antiserum by affinity-chromatography using epitope-specific immunogen. 1 mg/ml

Storage Stability : -15°C to -25°C/1 year (Do not lower than -25°C)

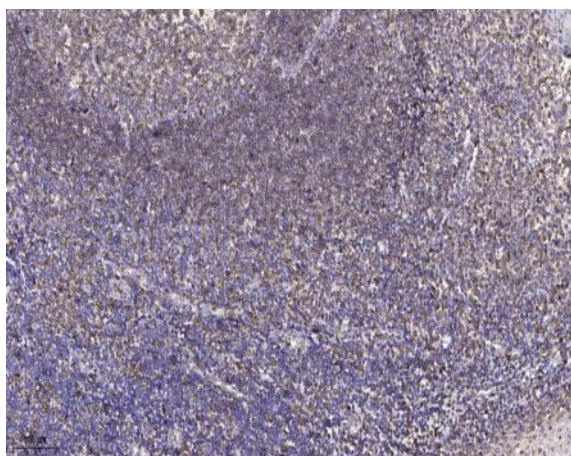
Background : function:Guanine nucleotide-binding proteins (G proteins) are involved as a modulator or transducer in various transmembrane signaling systems. The beta and gamma chains are required for the GTPase activity, for replacement of GDP by GTP, and for G protein-effector interaction.,similarity:Belongs to the G protein gamma family.,subunit:G proteins are composed of 3 units, alpha, beta and gamma. Interacts with beta-1 and beta-2, but not with beta-3.,tissue specificity:Brain, kidney, pancreas, skeletal muscle and faintly in cardiac muscle.,

Function : function:Guanine nucleotide-binding proteins (G proteins) are involved as a modulator or transducer in various transmembrane signaling systems. The beta and gamma chains are required for the GTPase activity, for replacement of GDP by GTP, and for G protein-effector interaction.,similarity:Belongs to the G protein gamma family.,subunit:G proteins are composed of 3 units, alpha, beta and gamma. Interacts with beta-1 and beta-2, but not with beta-3.,tissue specificity:Brain, kidney, pancreas, skeletal muscle and faintly in cardiac muscle.,

Subcellular Location : Cell membrane ; Lipid-anchor ; Cytoplasmic side .

Expression : Brain, kidney, pancreas, skeletal muscle and faintly in cardiac muscle.

Products Images



Immunohistochemical analysis of paraffin-embedded human tonsil. 1, Antibody was diluted at 1:200(4° overnight). 2, Tris-EDTA,pH9.0 was used for antigen retrieval. 3,Secondary antibody was diluted at 1:200(room temperature, 45min).