

## LIM and SH3 domain protein 1 Polyclonal Antibody

<b>Catalog No :</b>	YT6074
<b>Reactivity :</b>	Human;Mouse;Rat
<b>Applications :</b>	WB;IHC
<b>Target :</b>	LIM and SH3 domain protein 1
<b>Gene Name :</b>	LASP1 MLN50
<b>Protein Name :</b>	LIM and SH3 domain protein 1
<b>Human Gene Id :</b>	3927
<b>Human Swiss Prot No :</b>	Q14847
<b>Mouse Gene Id :</b>	16796
<b>Mouse Swiss Prot No :</b>	Q61792
<b>Immunogen :</b>	Synthesized peptide derived from human LIM and SH3 domain protein 1. at AA range: 90-130
<b>Specificity :</b>	This antibody detects endogenous levels of LIM and SH3 domain protein 1
<b>Formulation :</b>	Liquid in PBS containing 50% glycerol, 0.5% BSA and 0.02% sodium azide.
<b>Source :</b>	Polyclonal, Rabbit,IgG
<b>Dilution :</b>	WB 1:500-2000;IHC 1:50-300
<b>Purification :</b>	The antibody was affinity-purified from rabbit antiserum by affinity-chromatography using epitope-specific immunogen.
<b>Concentration :</b>	1 mg/ml
<b>Storage Stability :</b>	-15°C to -25°C/1 year(Do not lower than -25°C)

**Observed Band :** 38kD

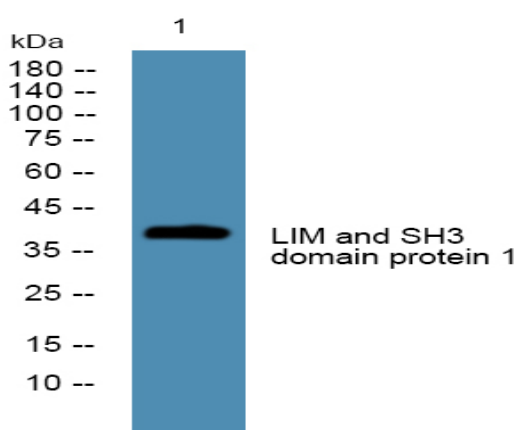
**Background :** This gene encodes a member of a subfamily of LIM proteins, characterized by a LIM motif and a domain of Src homology region 3, and also a member of the nebulin family of actin-binding proteins. The encoded protein is a cAMP and cGMP dependent signaling protein and binds to the actin cytoskeleton at extensions of the cell membrane. The encoded protein has been linked to metastatic breast cancer, hematopoietic tumors such as B-cell lymphomas, and colorectal cancer. [provided by RefSeq, Oct 2012],

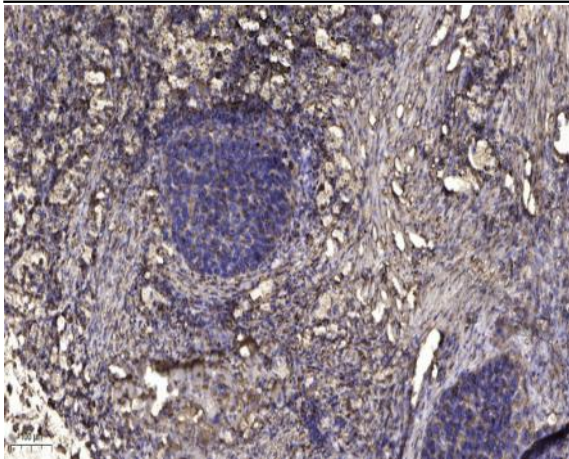
**Function :** function:Plays an important role in the regulation of dynamic actin-based, cytoskeletal activities. Agonist-dependent changes in LASP1 phosphorylation may also serve to regulate actin-associated ion transport activities, not only in the parietal cell but also in certain other F-actin-rich secretory epithelial cell types.,PTM:Phosphorylated.,similarity:Contains 1 LIM zinc-binding domain.,similarity:Contains 1 SH3 domain.,similarity:Contains 2 nebulin repeats.,subcellular location:Associated with the F-actin rich cortical cytoskeleton.,subunit:Interacts with F-actin.,

**Subcellular Location :** Cytoplasm, cell cortex . Cytoplasm, cytoskeleton . Associated with the F-actin rich cortical cytoskeleton. .

**Expression :** Epithelium,Liver,Mammary carcinoma,Platelet,Skin,T-cell,

## Products Images





Immunohistochemical analysis of paraffin-embedded human Squamous cell carcinoma of lung. 1, Antibody was diluted at 1:200(4° overnight). 2, Tris-EDTA,pH9.0 was used for antigen retrieval. 3,Secondary antibody was diluted at 1:200(room temperature, 45min).