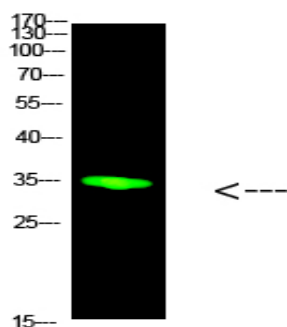


## PCNA Polyclonal Antibody

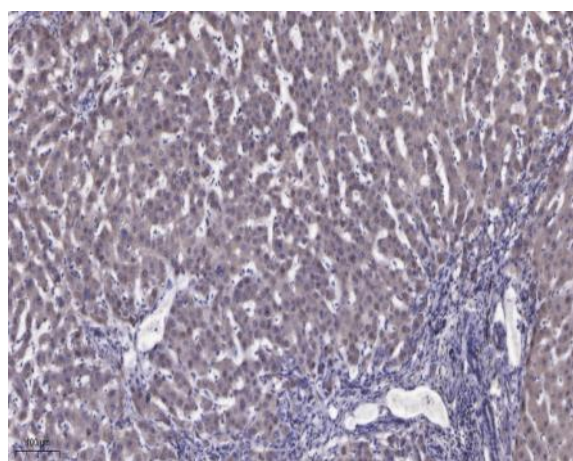
<b>Catalog No :</b>	YT6075
<b>Reactivity :</b>	Human;Mouse;Rat
<b>Applications :</b>	WB;ELISA;IHC
<b>Target :</b>	PCNA
<b>Fields :</b>	>>DNA replication;>>Base excision repair;>>Nucleotide excision repair;>>Mismatch repair;>>Cell cycle;>>Tight junction;>>Hepatitis B
<b>Gene Name :</b>	PCNA
<b>Protein Name :</b>	PCNA
<b>Human Gene Id :</b>	5111
<b>Human Swiss Prot No :</b>	P12004
<b>Mouse Gene Id :</b>	18538
<b>Mouse Swiss Prot No :</b>	P17918
<b>Immunogen :</b>	Synthesized peptide derived from human PCNA. at AA range: Internal
<b>Specificity :</b>	This antibody detects endogenous levels of PCNA
<b>Formulation :</b>	Liquid in PBS containing 50% glycerol, 0.5% BSA and 0.02% sodium azide.
<b>Source :</b>	Polyclonal, Rabbit,IgG
<b>Dilution :</b>	WB 1:500-2000;IHC 1:50-300; ELISA 2000-20000
<b>Purification :</b>	The antibody was affinity-purified from rabbit antiserum by affinity-chromatography using epitope-specific immunogen.
<b>Concentration :</b>	1 mg/ml

<b>Storage Stability :</b>	-15 °C to -25 °C/1 year(Do not lower than -25 °C)
<b>Observed Band :</b>	30-33kd
<b>Cell Pathway :</b>	DNA replication;Base excision repair;Nucleotide excision repair;Mismatch repair;Cell_Cycle_G1S;Cell_Cycle_G2M_DNA;
<b>Background :</b>	The protein encoded by this gene is found in the nucleus and is a cofactor of DNA polymerase delta. The encoded protein acts as a homotrimer and helps increase the processivity of leading strand synthesis during DNA replication. In response to DNA damage, this protein is ubiquitinated and is involved in the RAD6-dependent DNA repair pathway. Two transcript variants encoding the same protein have been found for this gene. Pseudogenes of this gene have been described on chromosome 4 and on the X chromosome. [provided by RefSeq, Jul 2008],
<b>Function :</b>	disease:Antibodies are present in sera from patients with systemic lupus erythematosus.,function:This protein is an auxiliary protein of DNA polymerase delta and is involved in the control of eukaryotic DNA replication by increasing the polymerase's processibility during elongation of the leading strand.,online information:PCNA entry,PTM:Upon methyl methanesulfonate-induced DNA damage, mono-ubiquitinated by the UBE2B-RAD18 complex on Lys-164. This induces non-canonical poly-ubiquitination on Lys-164 through 'Lys-63' linkage of ubiquitin moieties by the E2 complex UBE2N-UBE2V2 and the E3 ligases RNF8 and SHPRH, which are required for DNA repair.,similarity:Belongs to the PCNA family.,subunit:Homotrimer. Interacts with KCTD10. Interacts with PPP1R15A (By similarity). Forms a complex with activator 1 heteropentamer in the presence of ATP. Interacts with POLH, POLK, DNMT1, ERCC5/XPG, FEN1, C
<b>Subcellular Location :</b>	Nucleus . Colocalizes with CREBBP, EP300 and POLD1 to sites of DNA damage (PubMed:24939902). Forms nuclear foci representing sites of ongoing DNA replication and vary in morphology and number during S phase (PubMed:15543136). Co-localizes with SMARCA5/SNF2H and BAZ1B/WSTF at replication foci during S phase (PubMed:15543136). Together with APEX2, is redistributed in discrete nuclear foci in presence of oxidative DNA damaging agents. .
<b>Expression :</b>	Bone marrow,Fetal brain cortex,Lung,Placenta,

## Products Images



Western Blot analysis of Hela cells using primary antibody diluted at 1:1000(4 °C overnight). Secondary antibody:Goat Anti-rabbit IgG IRDye 800( diluted at 1:5000, 25 °C, 1 hour) cells nucleus extracted by Minute TM Cytoplasmic and Nuclear Fractionation kit (SC-003, Inventbiotech, MN, USA).



Immunohistochemical analysis of paraffin-embedded human liver cancer. 1, Antibody was diluted at 1:200(4 ° overnight). 2, Tris-EDTA,pH9.0 was used for antigen retrieval. 3,Secondary antibody was diluted at 1:200(room temperature, 45min).