

GADD34 Polyclonal Antibody

Catalog No :	YT5900
Reactivity :	Human;Rat;Mouse;
Applications :	WB;ELISA
Target :	GADD34
Fields :	>>Protein processing in endoplasmic reticulum
Gene Name :	PPP1R15A GADD34
Protein Name :	Protein phosphatase 1 regulatory subunit 15A (Growth arrest and DNA damage-inducible protein GADD34) (Myeloid differentiation primary response protein MyD116 homolog)
Human Gene Id :	23645
Human Swiss Prot No :	O75807
Mouse Gene Id :	17872
Mouse Swiss Prot No :	P17564
Immunogen :	Synthetic peptide from human protein at AA range: 430-490
Specificity :	The antibody detects endogenous GADD34
Formulation :	Liquid in PBS containing 50% glycerol, 0.5% BSA and 0.02% sodium azide.
Source :	Polyclonal, Rabbit,IgG
Dilution :	WB 1:500-2000, ELISA 1:10000-20000
Purification :	The antibody was affinity-purified from rabbit antiserum by affinity-chromatography using epitope-specific immunogen.
Concentration :	1 mg/ml

Storage Stability : -15°C to -25°C/1 year (Do not lower than -25°C)

Observed Band : 73kD

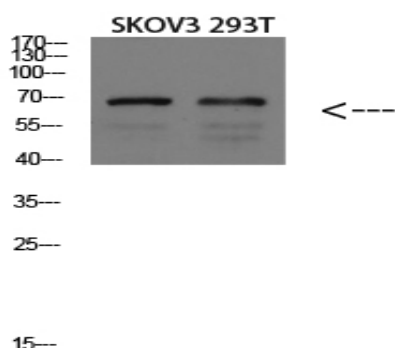
Background : This gene is a member of a group of genes whose transcript levels are increased following stressful growth arrest conditions and treatment with DNA-damaging agents. The induction of this gene by ionizing radiation occurs in certain cell lines regardless of p53 status, and its protein response is correlated with apoptosis following ionizing radiation. [provided by RefSeq, Jul 2008],

Function : function:Recruits the serine/threonine-protein phosphatase PP1 to dephosphorylate the translation initiation factor eIF-2A/EIF2S1, thereby reversing the shut-off of protein synthesis initiated by stress-inducible kinases and facilitating recovery of cells from stress. Down-regulates the TGF-beta signaling pathway by promoting dephosphorylation of TGFB1 by PP1. May promote apoptosis by inducing TP53 phosphorylation on 'Ser-15'. induction:By methyl methanesulfonate and ionizing irradiation. By IL24 in melanoma cells; which induces apoptosis. miscellaneous:The phosphatase activity of the PPP1R15A-PP1 complex toward EIF2S1 is specifically inhibited by Salubrinal, a drug that protects cells from endoplasmic reticulum stress. PTM:Phosphorylated on tyrosine by LYN; which impairs its antiproliferative activity. similarity:Belongs to the PPP1R15 family. subunit:Interacts with PCNA (By similarity)

Subcellular Location : Endoplasmic reticulum membrane; Peripheral membrane protein; Cytoplasmic side . Mitochondrion outer membrane; Peripheral membrane protein; Cytoplasmic side . Associates with membranes via an N-terminal amphipathic intramembrane region. .

Expression : Brain,

Products Images



Western blot analysis of MOUSE-BRAIN lysate, antibody was diluted at 1000. Secondary antibody(catalog#:RS0002) was diluted at 1:20000