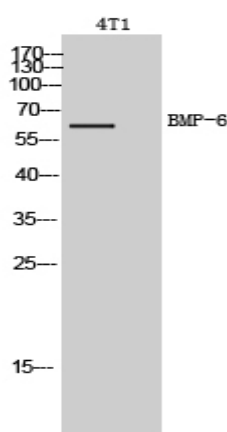


## BMP-6 Polyclonal Antibody

<b>Catalog No :</b>	YT5655
<b>Reactivity :</b>	Human;Mouse;Rat
<b>Applications :</b>	WB;ELISA
<b>Target :</b>	BMP-6
<b>Fields :</b>	>>Cytokine-cytokine receptor interaction;>>TGF-beta signaling pathway;>>Hippo signaling pathway;>>Ovarian steroidogenesis
<b>Gene Name :</b>	BMP6
<b>Protein Name :</b>	Bone morphogenetic protein 6
<b>Human Gene Id :</b>	654
<b>Human Swiss Prot No :</b>	P22004
<b>Mouse Gene Id :</b>	12161
<b>Mouse Swiss Prot No :</b>	P20722
<b>Rat Gene Id :</b>	25644
<b>Rat Swiss Prot No :</b>	Q04906
<b>Immunogen :</b>	The antiserum was produced against synthesized peptide derived from the Internal region of human BMP6. AA range:341-390
<b>Specificity :</b>	BMP-6 Polyclonal Antibody detects endogenous levels of BMP-6 protein.
<b>Formulation :</b>	Liquid in PBS containing 50% glycerol, 0.5% BSA and 0.02% sodium azide.
<b>Source :</b>	Polyclonal, Rabbit,IgG
<b>Dilution :</b>	WB 1:500 - 1:2000. ELISA: 1:10000. Not yet tested in other applications.

<b>Purification :</b>	The antibody was affinity-purified from rabbit antiserum by affinity-chromatography using epitope-specific immunogen.
<b>Concentration :</b>	1 mg/ml
<b>Storage Stability :</b>	-15°C to -25°C/1 year(Do not lower than -25°C)
<b>Observed Band :</b>	60kD
<b>Cell Pathway :</b>	Hedgehog;TGF-beta;
<b>Background :</b>	This gene encodes a secreted ligand of the TGF-beta (transforming growth factor-beta) superfamily of proteins. Ligands of this family bind various TGF-beta receptors leading to recruitment and activation of SMAD family transcription factors that regulate gene expression. The encoded preproprotein is proteolytically processed to generate each subunit of the disulfide-linked homodimer. This protein regulates a wide range of biological processes including iron homeostasis, fat and bone development, and ovulation. Differential expression of this gene may be associated with progression of breast and prostate cancer. Mutations in this gene may be associated with iron overload in human patients. [provided by RefSeq, Jul 2016],
<b>Function :</b>	function:Induces cartilage and bone formation.,online information:Bone morphogenetic protein 6 entry,similarity:Belongs to the TGF-beta family.,subunit:Interacts with SOSTDC1.,
<b>Subcellular Location :</b>	Secreted .
<b>Expression :</b>	Bone,PCR rescued clones,

## Products Images



Western Blot analysis of 4T1 cells using BMP-6 Polyclonal Antibody. Secondary antibody(catalog#:RS0002) was diluted at 1:20000