

## Stra8 Polyclonal Antibody

<b>Catalog No :</b>	YT5557
<b>Reactivity :</b>	Human;Rat;Mouse;
<b>Applications :</b>	WB;IHC
<b>Target :</b>	Stra8
<b>Gene Name :</b>	STRA8
<b>Protein Name :</b>	Stimulated by retinoic acid gene 8 protein homolog
<b>Human Gene Id :</b>	346673
<b>Human Swiss Prot No :</b>	Q7Z7C7
<b>Mouse Swiss Prot No :</b>	P70278
<b>Immunogen :</b>	The antiserum was produced against synthesized peptide derived from the Internal region of human STRA8. AA range:151-200
<b>Specificity :</b>	Stra8 Polyclonal Antibody detects endogenous levels of Stra8 protein.
<b>Formulation :</b>	Liquid in PBS containing 50% glycerol, 0.5% BSA and 0.02% sodium azide.
<b>Source :</b>	Polyclonal, Rabbit,IgG
<b>Dilution :</b>	WB 1:500-2000;IHC 1:50-300
<b>Purification :</b>	The antibody was affinity-purified from rabbit antiserum by affinity-chromatography using epitope-specific immunogen.
<b>Concentration :</b>	1 mg/ml
<b>Storage Stability :</b>	-15°C to -25°C/1 year(Do not lower than -25°C)
<b>Observed Band :</b>	66kD

## Background :

This gene encodes a retinoic acid-responsive protein. A homologous protein in mouse has been shown to be involved in the regulation of meiotic initiation in both spermatogenesis and oogenesis, though feature differences between the mouse and human proteins suggest that these homologs are not entirely functionally equivalent. It is thought that this gene may play a role in spermatogenesis in humans. [provided by RefSeq, Nov 2010],

## Function :

function:Required for the transition into meiosis for both female and male germ cells. In female germ cells, required for premeiotic DNA replication and subsequent events in meiotic prophase.,PTM:Phosphorylated.,tissue specificity:Expressed specifically in testis.,

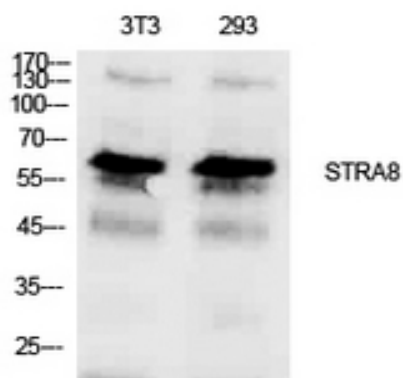
## Subcellular Location :

Cytoplasm . Nucleus . Shuttles between nucleus and cytoplasm. Nuclear export is XPO1-dependent. .

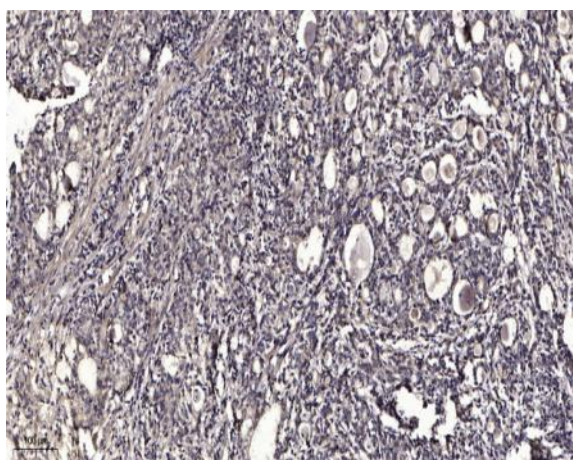
## Expression :

Expressed specifically in testis and fetal ovaries.

## Products Images



Western Blot analysis of NIH-3T3, 293 cells using Stra8 Polyclonal Antibody. Antibody was diluted at 1:1000. Secondary antibody(catalog#:RS0002) was diluted at 1:20000



Immunohistochemical analysis of paraffin-embedded human Gastric adenocarcinoma. 1, Antibody was diluted at 1:200(4° overnight). 2, Tris-EDTA,pH9.0 was used for antigen retrieval. 3,Secondary antibody was diluted at 1:200(room temperature, 45min).