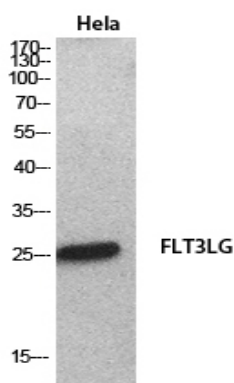


## Flt3-L Polyclonal Antibody

<b>Catalog No :</b>	YT5516
<b>Reactivity :</b>	Human;Rat;Mouse;
<b>Applications :</b>	WB;ELISA
<b>Target :</b>	Flt3-L
<b>Fields :</b>	>>MAPK signaling pathway;>>Ras signaling pathway;>>PI3K-Akt signaling pathway;>>Hematopoietic cell lineage;>>Pathways in cancer
<b>Gene Name :</b>	FLT3LG
<b>Protein Name :</b>	Fms-related tyrosine kinase 3 ligand
<b>Human Gene Id :</b>	2323
<b>Human Swiss Prot No :</b>	P49771
<b>Mouse Swiss Prot No :</b>	P49772
<b>Immunogen :</b>	The antiserum was produced against synthesized peptide derived from the C-terminal region of human FLT3LG. AA range:171-220
<b>Specificity :</b>	Flt3-L Polyclonal Antibody detects endogenous levels of Flt3-L protein.
<b>Formulation :</b>	Liquid in PBS containing 50% glycerol, 0.5% BSA and 0.02% sodium azide.
<b>Source :</b>	Polyclonal, Rabbit,IgG
<b>Dilution :</b>	WB 1:500 - 1:2000. ELISA: 1:20000. Not yet tested in other applications.
<b>Purification :</b>	The antibody was affinity-purified from rabbit antiserum by affinity-chromatography using epitope-specific immunogen.
<b>Concentration :</b>	1 mg/ml
<b>Storage Stability :</b>	-15°C to -25°C/1 year(Do not lower than -25°C)

<b>Observed Band :</b>	26kD
<b>Cell Pathway :</b>	Cytokine-cytokine receptor interaction;Hematopoietic cell lineage;Pathways in cancer;
<b>Background :</b>	Dendritic cells (DCs) provide the key link between innate and adaptive immunity by recognizing pathogens and priming pathogen-specific immune responses. FLT3LG controls the development of DCs and is particularly important for plasmacytoid DCs and CD8 (see MIM 186910)-positive classical DCs and their CD103 (ITGAE; MIM 604682)-positive tissue counterparts (summary by Sathaliyawala et al., 2010 [PubMed 20933441]).[supplied by OMIM, Jan 2011],
<b>Function :</b>	function:Stimulates the proliferation of early hematopoietic cells. Synergizes well with a number of other colony stimulating factors and interleukins.,subunit:Homodimer (isoform 2).,
<b>Subcellular Location :</b>	[Isoform 1]: Cell membrane; Single-pass type I membrane protein.; [Isoform 2]: Secreted.
<b>Expression :</b>	Brain,Spleen,

## Products Images



Western Blot analysis of HeLa cells using Flt3-L Polyclonal Antibody. Secondary antibody(catalog#:RS0002) was diluted at 1:20000