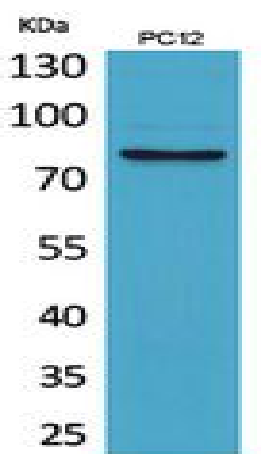


## CD239 Polyclonal Antibody

<b>Catalog No :</b>	YT5477
<b>Reactivity :</b>	Human;Mouse;Rat
<b>Applications :</b>	WB;ELISA
<b>Target :</b>	CD239
<b>Gene Name :</b>	BCAM
<b>Protein Name :</b>	Basal cell adhesion molecule
<b>Human Gene Id :</b>	4059
<b>Human Swiss Prot No :</b>	P50895
<b>Mouse Gene Id :</b>	57278
<b>Mouse Swiss Prot No :</b>	Q9R069
<b>Rat Gene Id :</b>	78958
<b>Rat Swiss Prot No :</b>	Q9ESS6
<b>Immunogen :</b>	The antiserum was produced against synthesized peptide derived from the Internal region of human BCAM. AA range:191-240
<b>Specificity :</b>	CD239 Polyclonal Antibody detects endogenous levels of CD239 protein.
<b>Formulation :</b>	Liquid in PBS containing 50% glycerol, 0.5% BSA and 0.02% sodium azide.
<b>Source :</b>	Polyclonal, Rabbit,IgG
<b>Dilution :</b>	WB 1:500 - 1:2000. ELISA: 1:20000. Not yet tested in other applications.
<b>Purification :</b>	The antibody was affinity-purified from rabbit antiserum by affinity-chromatography using epitope-specific immunogen.

<b>Concentration :</b>	1 mg/ml
<b>Storage Stability :</b>	-15°C to -25°C/1 year(Do not lower than -25°C)
<b>Observed Band :</b>	78kD
<b>Background :</b>	This gene encodes Lutheran blood group glycoprotein, a member of the immunoglobulin superfamily and a receptor for the extracellular matrix protein, laminin. The protein contains five extracellular immunoglobulin domains, a single transmembrane domain, and a short C-terminal cytoplasmic tail. This protein may play a role in epithelial cell cancer and in vaso-occlusion of red blood cells in sickle cell disease. Polymorphisms in this gene define some of the antigens in the Lutheran system and also the Auberger system. Inactivating variants of this gene result in the recessive Lutheran null phenotype, Lu(a-b-), of the Lutheran blood group. Two transcript variants encoding different isoforms have been found for this gene. [provided by RefSeq, May 2012],
<b>Function :</b>	cell adhesion, cell-matrix adhesion, biological adhesion, cell-substrate adhesion,
<b>Subcellular Location :</b>	Membrane; Single-pass type I membrane protein.
<b>Expression :</b>	Wide tissue distribution (highest in the pancreas and very low in brain). Closely associated with the basal layer of cells in epithelia and the endothelium of blood vessel walls.

## Products Images



Western Blot analysis of PC12 cells using CD239 Polyclonal Antibody. Secondary antibody(catalog#:RS0002) was diluted at 1:20000