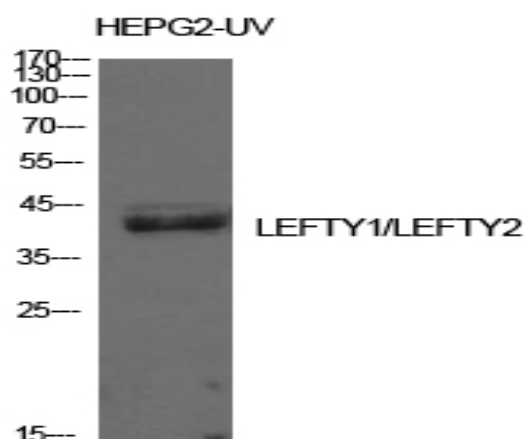


Lefty Polyclonal Antibody

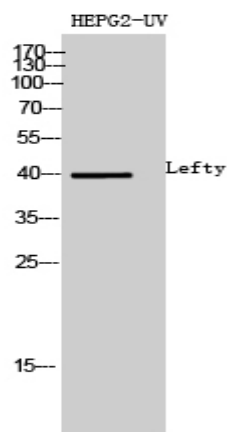
| | |
|------------------------------|--|
| Catalog No : | YT5647 |
| Reactivity : | Human;Mouse |
| Applications : | WB;IHC |
| Target : | Lefty |
| Fields : | >>TGF-beta signaling pathway;>>Signaling pathways regulating pluripotency of stem cells |
| Gene Name : | LEFTY1/LEFTY2 |
| Protein Name : | Left-right determination factor 1/Left-right determination factor 2 |
| Human Gene Id : | 10637/7044 |
| Human Swiss Prot No : | O75610/O00292 |
| Mouse Gene Id : | 13590/320202 |
| Immunogen : | The antiserum was produced against synthesized peptide derived from the C-terminal region of human LEFTY1/LEFTY2. AA range:301-350 |
| Specificity : | Lefty Polyclonal Antibody detects endogenous levels of Lefty protein. |
| Formulation : | Liquid in PBS containing 50% glycerol, 0.5% BSA and 0.02% sodium azide. |
| Source : | Polyclonal, Rabbit,IgG |
| Dilution : | WB 1:500-2000;IHC 1:50-300 |
| Purification : | The antibody was affinity-purified from rabbit antiserum by affinity-chromatography using epitope-specific immunogen. |
| Concentration : | 1 mg/ml |
| Storage Stability : | -15°C to -25°C/1 year(Do not lower than -25°C) |

| | |
|-------------------------------|---|
| Observed Band : | 40kD |
| Cell Pathway : | TGF-beta; |
| Background : | <p>This gene encodes a secreted ligand of the TGF-beta (transforming growth factor-beta) superfamily of proteins. Ligands of this family bind various TGF-beta receptors leading to recruitment and activation of SMAD family transcription factors that regulate gene expression. The encoded preproprotein is proteolytically processed to generate the mature protein, which plays a role in left-right asymmetry determination of organ systems during development. This gene is closely linked to both a related family member and a related pseudogene. [provided by RefSeq, Aug 2016],</p> |
| Function : | <p>function:Required for left-right axis determination as a regulator of LEFTY2 and NODAL.,PTM:The processing of the protein may also occur at the second R-X-X-R site located at AA 132-135. Processing appears to be regulated in a cell-type specific manner.,similarity:Belongs to the TGF-beta family.,</p> |
| Subcellular Location : | Secreted. |
| Expression : | Colon,Pancreas,Spleen,Teratocarcinoma, |

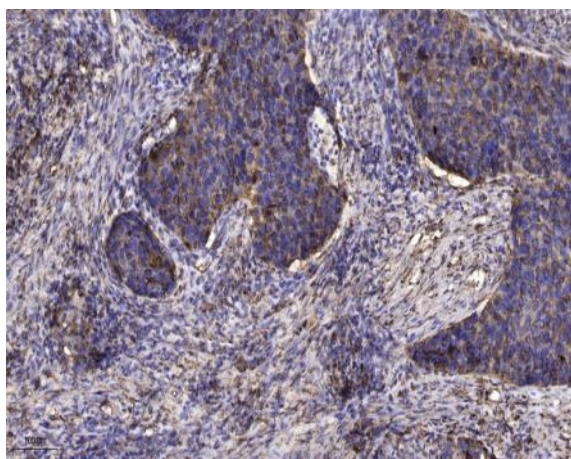
Products Images



Western Blot analysis of HepG2-UV cells using Lefty Polyclonal Antibody. Antibody was diluted at 1:500. Secondary antibody(catalog#:RS0002) was diluted at 1:20000



Western Blot analysis of HEPG2-UV cells using Lefty Polyclonal Antibody diluted at 1:500. Secondary antibody(catalog#:RS0002) was diluted at 1:20000



Immunohistochemical analysis of paraffin-embedded human Squamous cell carcinoma of lung. 1, Antibody was diluted at 1:200(4° overnight). 2, Tris-EDTA,pH9.0 was used for antigen retrieval. 3,Secondary antibody was diluted at 1:200(room temperature, 45min).