

## IGFBP6 Polyclonal Antibody

<b>Catalog No :</b>	YT5361
<b>Reactivity :</b>	Human;Rat;Mouse;
<b>Applications :</b>	WB;ELISA
<b>Target :</b>	IGFBP6
<b>Gene Name :</b>	IGFBP6
<b>Protein Name :</b>	Insulin-like growth factor-binding protein 6
<b>Human Gene Id :</b>	3489
<b>Human Swiss Prot No :</b>	P24592
<b>Mouse Swiss Prot No :</b>	P47880
<b>Immunogen :</b>	The antiserum was produced against synthesized peptide derived from the Internal region of human IGFBP6. AA range:101-150
<b>Specificity :</b>	IGFBP6 Polyclonal Antibody detects endogenous levels of IGFBP6 protein.
<b>Formulation :</b>	Liquid in PBS containing 50% glycerol, 0.5% BSA and 0.02% sodium azide.
<b>Source :</b>	Polyclonal, Rabbit,IgG
<b>Dilution :</b>	WB 1:500 - 1:2000. ELISA: 1:20000. Not yet tested in other applications.
<b>Purification :</b>	The antibody was affinity-purified from rabbit antiserum by affinity-chromatography using epitope-specific immunogen.
<b>Concentration :</b>	1 mg/ml
<b>Storage Stability :</b>	-15°C to -25°C/1 year(Do not lower than -25°C)
<b>Observed Band :</b>	25kD

**Background :**

function:IGF-binding proteins prolong the half-life of the IGFs and have been shown to either inhibit or stimulate the growth promoting effects of the IGFs on cell culture. They alter the interaction of IGFs with their cell surface receptors.,PTM:O-linked glycans consist of hexose (probably Gal), N-acetylhexosamine (probably GalNAc) and sialic acid residues. Major glycoforms consist of 8-16 monosaccharides (by homology to IGFBP6 expressed recombinantly in CHO cells).,similarity:Contains 1 IGFBP N-terminal domain.,similarity:Contains 1 thyroglobulin type-1 domain.,

**Function :**

function:IGF-binding proteins prolong the half-life of the IGFs and have been shown to either inhibit or stimulate the growth promoting effects of the IGFs on cell culture. They alter the interaction of IGFs with their cell surface receptors.,PTM:O-linked glycans consist of hexose (probably Gal), N-acetylhexosamine (probably GalNAc) and sialic acid residues. Major glycoforms consist of 8-16 monosaccharides (by homology to IGFBP6 expressed recombinantly in CHO cells).,similarity:Contains 1 IGFBP N-terminal domain.,similarity:Contains 1 thyroglobulin type-1 domain.,

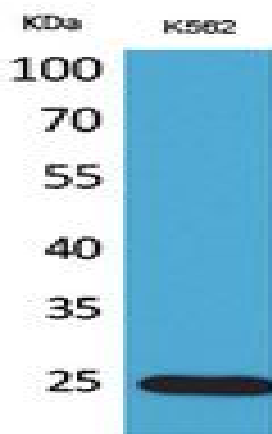
**Subcellular Location :**

Secreted .

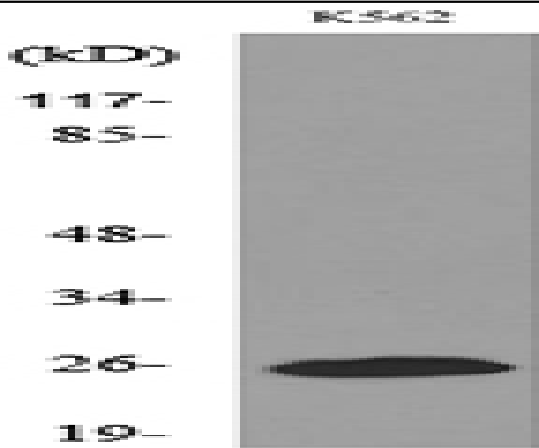
**Expression :**

Cerebrospinal fluid,Fibroblast,Osteosarcoma,Pancreas,Placen

## Products Images



Western Blot analysis of K562 cells using IGFBP6 Polyclonal Antibody. Secondary antibody(catalog#:RS0002) was diluted at 1:20000



Western blot analysis of lysate from K562 cells, using IGFBP6 Antibody.