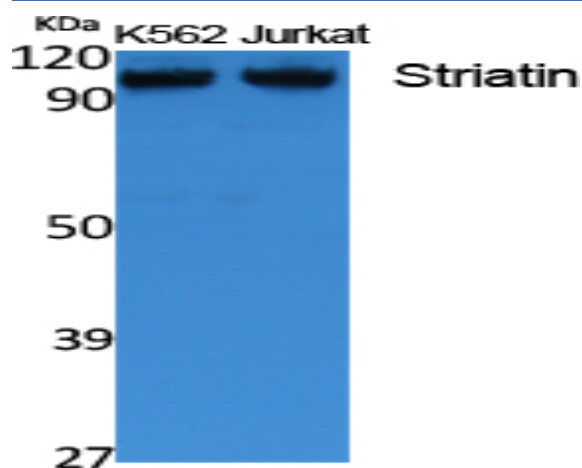


## Striatin Polyclonal Antibody

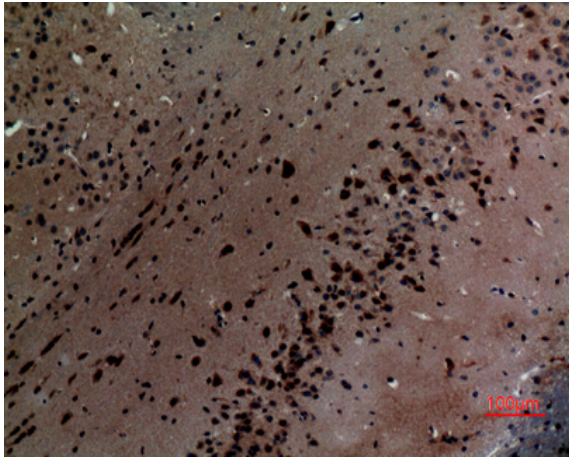
<b>Catalog No :</b>	YT5092
<b>Reactivity :</b>	Human;Mouse;Rat
<b>Applications :</b>	WB;IHC;IF;ELISA
<b>Target :</b>	Striatin
<b>Gene Name :</b>	STRN
<b>Protein Name :</b>	Striatin
<b>Human Gene Id :</b>	6801
<b>Human Swiss Prot No :</b>	O43815
<b>Mouse Gene Id :</b>	268980
<b>Mouse Swiss Prot No :</b>	O55106
<b>Rat Gene Id :</b>	29149
<b>Rat Swiss Prot No :</b>	P70483
<b>Immunogen :</b>	Synthesized peptide derived from the C-terminal region of human Striatin.
<b>Specificity :</b>	Striatin Polyclonal Antibody detects endogenous levels of Striatin protein.
<b>Formulation :</b>	Liquid in PBS containing 50% glycerol, 0.5% BSA and 0.02% sodium azide.
<b>Source :</b>	Polyclonal, Rabbit,IgG
<b>Dilution :</b>	WB 1:500 - 1:2000. IHC: 1:100-300 ELISA: 1:5000.. IF 1:50-200
<b>Purification :</b>	The antibody was affinity-purified from rabbit antiserum by affinity-chromatography using epitope-specific immunogen.

<b>Concentration :</b>	1 mg/ml
<b>Storage Stability :</b>	-15°C to -25°C/1 year(Do not lower than -25°C)
<b>Observed Band :</b>	86kD
<b>Background :</b>	function:Calmodulin-binding protein which may function as scaffolding or signaling protein and may play a role in dendritic Ca(2+) signaling.,similarity:Belongs to the WD repeat striatin family.,similarity:Contains 6 WD repeats.,subunit:Interacts with protein phosphatase 2A (PP2A) .,tissue specificity:Preferentially expressed in brain.,
<b>Function :</b>	function:Calmodulin-binding protein which may function as scaffolding or signaling protein and may play a role in dendritic Ca(2+) signaling.,similarity:Belongs to the WD repeat striatin family.,similarity:Contains 6 WD repeats.,subunit:Interacts with protein phosphatase 2A (PP2A) .,tissue specificity:Preferentially expressed in brain.,
<b>Subcellular Location :</b>	Cytoplasm . Membrane ; Peripheral membrane protein . Cell projection, dendritic spine . CTTNBP2-binding may regulate dendritic spine distribution. .
<b>Expression :</b>	Preferentially expressed in brain.

## Products Images



Western Blot analysis of extracts from K562 cells, using Striatin Polyclonal Antibody. Secondary antibody(catalog#:RS0002) was diluted at 1:20000



Immunohistochemical analysis of paraffin-embedded mouse-brain, antibody was diluted at 1:100