

ZSCAN22 Polyclonal Antibody

Catalog No :	YT4998
Reactivity :	Human;Rat;Mouse;
Applications :	WB;IHC;IF;ELISA
Target :	ZSCAN22
Gene Name :	ZSCAN22
Protein Name :	Zinc finger and SCAN domain-containing protein 22
Human Gene Id :	342945
Human Swiss Prot No :	P10073
Immunogen :	The antiserum was produced against synthesized peptide derived from human ZSCAN22. AA range:321-370
Specificity :	ZSCAN22 Polyclonal Antibody detects endogenous levels of ZSCAN22 protein.
Formulation :	Liquid in PBS containing 50% glycerol, 0.5% BSA and 0.02% sodium azide.
Source :	Polyclonal, Rabbit,IgG
Dilution :	WB 1:500 - 1:2000. IHC 1:100 - 1:300. ELISA: 1:10000.. IF 1:50-200
Purification :	The antibody was affinity-purified from rabbit antiserum by affinity-chromatography using epitope-specific immunogen.
Concentration :	1 mg/ml
Storage Stability :	-15°C to -25°C/1 year(Do not lower than -25°C)
Observed Band :	55kD
Background :	function:May be involved in transcriptional regulation.,PTM:Phosphorylated upon DNA damage, probably by ATM or ATR.,similarity:Belongs to the krueppel

C2H2-type zinc-finger protein family.,similarity:Contains 1 SCAN box domain.,similarity:Contains 8 C2H2-type zinc fingers.,

Function :

function:May be involved in transcriptional regulation.,PTM:Phosphorylated upon DNA damage, probably by ATM or ATR.,similarity:Belongs to the krueppel C2H2-type zinc-finger protein family.,similarity:Contains 1 SCAN box domain.,similarity:Contains 8 C2H2-type zinc fingers.,

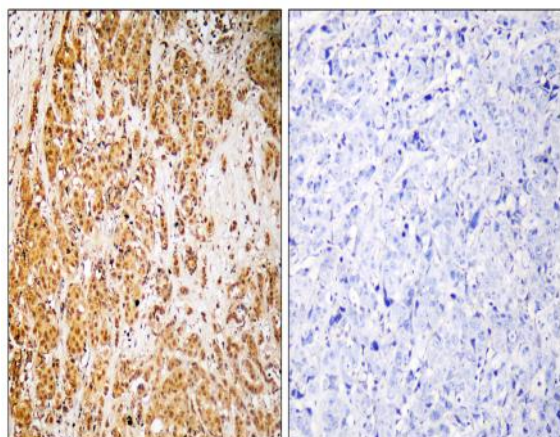
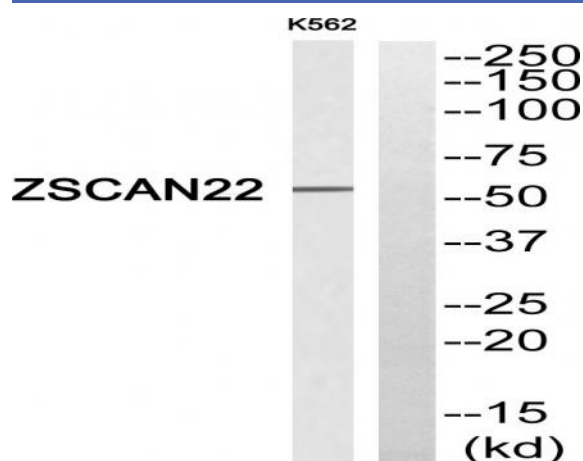
Subcellular Location :

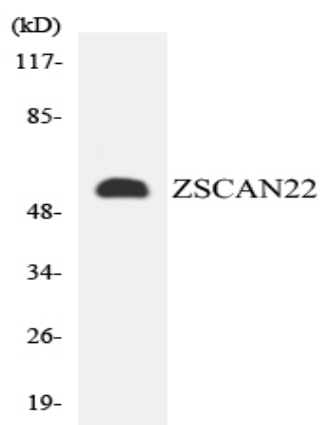
Nucleus .

Expression :

Fetal kidney,Placenta,Uterus,

Products Images





Western blot analysis of the lysates from HepG2 cells using ZSCAN22 antibody.