

ZNF608 Polyclonal Antibody

Catalog No :	YT4976
Reactivity :	Human;Mouse
Applications :	WB;IHC;IF;ELISA
Target :	ZNF608
Gene Name :	ZNF608
Protein Name :	Zinc finger protein 608
Human Gene Id :	57507
Human Swiss Prot No :	Q9ULD9
Mouse Gene Id :	269023
Mouse Swiss Prot No :	Q56A10
Immunogen :	The antiserum was produced against synthesized peptide derived from human ZNF608. AA range:1231-1280
Specificity :	ZNF608 Polyclonal Antibody detects endogenous levels of ZNF608 protein.
Formulation :	Liquid in PBS containing 50% glycerol, 0.5% BSA and 0.02% sodium azide.
Source :	Polyclonal, Rabbit,IgG
Dilution :	WB 1:500 - 1:2000. IHC 1:100 - 1:300. ELISA: 1:5000.. IF 1:50-200
Purification :	The antibody was affinity-purified from rabbit antiserum by affinity-chromatography using epitope-specific immunogen.
Concentration :	1 mg/ml
Storage Stability :	-15°C to -25°C/1 year(Do not lower than -25°C)

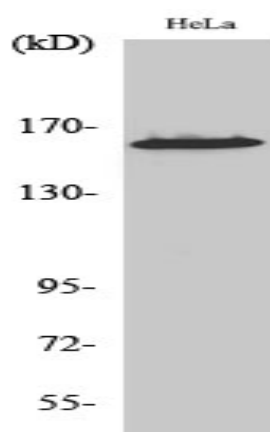
Observed Band : 160kD

Background : miscellaneous:Antigen recognized by autologous antibody in patients with renal-cell carcinoma.,PTM:Phosphorylated upon DNA damage, probably by ATM or ATR.,similarity:Contains 1 C2H2-type zinc finger.,

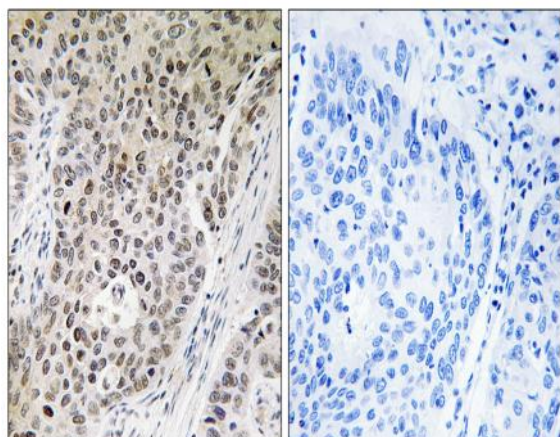
Function : miscellaneous:Antigen recognized by autologous antibody in patients with renal-cell carcinoma.,PTM:Phosphorylated upon DNA damage, probably by ATM or ATR.,similarity:Contains 1 C2H2-type zinc finger.,

Expression : Brain,PNS,Renal cell carcinoma,Skin,Testis,

Products Images



Western Blot analysis of various cells using ZNF608 Polyclonal Antibody diluted at 1:500. Secondary antibody(catalog#:RS0002) was diluted at 1:20000



Immunohistochemistry analysis of paraffin-embedded human lung carcinoma tissue, using ZNF608 Antibody. The picture on the right is blocked with the synthesized peptide.