

ZFYVE19 Polyclonal Antibody

Catalog No :	YT4942
Reactivity :	Human;Rat;Mouse;
Applications :	WB;IHC;IF;ELISA
Target :	ZFYVE19
Gene Name :	ZFYVE19
Protein Name :	Zinc finger FYVE domain-containing protein 19
Human Gene Id :	84936
Human Swiss Prot No :	Q96K21
Mouse Swiss Prot No :	Q9DAZ9
Immunogen :	The antiserum was produced against synthesized peptide derived from human ZFYVE19. AA range:311-360
Specificity :	ZFYVE19 Polyclonal Antibody detects endogenous levels of ZFYVE19 protein.
Formulation :	Liquid in PBS containing 50% glycerol, 0.5% BSA and 0.02% sodium azide.
Source :	Polyclonal, Rabbit,IgG
Dilution :	WB 1:500 - 1:2000. IHC 1:100 - 1:300. ELISA: 1:40000.. IF 1:50-200
Purification :	The antibody was affinity-purified from rabbit antiserum by affinity-chromatography using epitope-specific immunogen.
Concentration :	1 mg/ml
Storage Stability :	-15°C to -25°C/1 year(Do not lower than -25°C)
Observed Band :	50kD

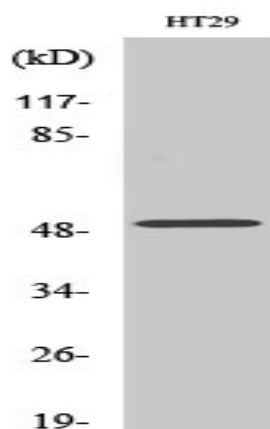
Background : disease:A chromosomal aberration involving ZFYVE19 is associated with acute myeloblastic leukemia (AML). Translocation t(11;15)(q23;q14) with MLL/HRX.,PTM:Phosphorylated upon DNA damage, probably by ATM or ATR.,similarity:Contains 1 FYVE-type zinc finger.,tissue specificity:Detected in brain, heart, skeletal muscle, kidney and liver.,

Function : disease:A chromosomal aberration involving ZFYVE19 is associated with acute myeloblastic leukemia (AML). Translocation t(11;15)(q23;q14) with MLL/HRX.,PTM:Phosphorylated upon DNA damage, probably by ATM or ATR.,similarity:Contains 1 FYVE-type zinc finger.,tissue specificity:Detected in brain, heart, skeletal muscle, kidney and liver.,

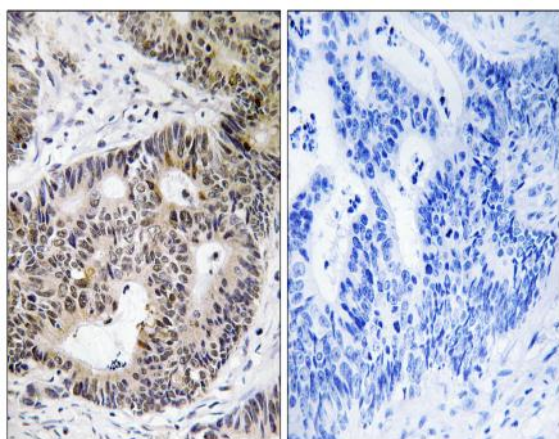
Subcellular Location : Cytoplasm, cytoskeleton, microtubule organizing center, centrosome . Cleavage furrow . Midbody, Midbody ring . Localizes mainly on centrosomes in interphase and early mitosis. Localizes at the cleavage furrow and midbody ring in late mitosis and cytokinesis. .

Expression : Detected in brain, heart, skeletal muscle, kidney and liver.

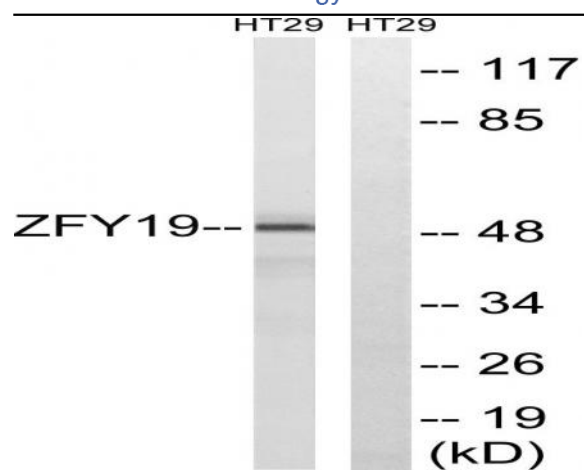
Products Images



Western Blot analysis of various cells using ZFYVE19 Polyclonal Antibody. Secondary antibody(catalog#:RS0002) was diluted at 1:20000



Immunohistochemistry analysis of paraffin-embedded human colon carcinoma tissue, using ZFYVE19 Antibody. The picture on the right is blocked with the synthesized peptide.



Western blot analysis of lysates from HT-29 cells, using ZFYVE19 Antibody. The lane on the right is blocked with the synthesized peptide.