

## Wee 2 Polyclonal Antibody

|                              |   |
|------------------------------|---|
| <b>Catalog No :</b>          | YT4904  |
| <b>Reactivity :</b>          | Human;Rat;Mouse;  |
| <b>Applications :</b>        | WB;ELISA  |
| <b>Target :</b>              | Wee 2   |
| <b>Fields :</b>              | >>Cell cycle;>>Human immunodeficiency virus 1 infection   |
| <b>Gene Name :</b>           | WEE2  |
| <b>Protein Name :</b>        | Wee1-like protein kinase 2  |
| <b>Human Gene Id :</b>       | 494551  |
| <b>Human Swiss Prot No :</b> | P0C1S8  |
| <b>Mouse Swiss Prot No :</b> | Q66JT0  |
| <b>Immunogen :</b>           | The antiserum was produced against synthesized peptide derived from human WEE2. AA range:151-200                      |
| <b>Specificity :</b>         | Wee 2 Polyclonal Antibody detects endogenous levels of Wee 2 protein.   |
| <b>Formulation :</b>         | Liquid in PBS containing 50% glycerol, 0.5% BSA and 0.02% sodium azide.   |
| <b>Source :</b>              | Polyclonal, Rabbit,IgG  |
| <b>Dilution :</b>            | WB 1:500 - 1:2000. ELISA: 1:5000. Not yet tested in other applications.   |
| <b>Purification :</b>        | The antibody was affinity-purified from rabbit antiserum by affinity-chromatography using epitope-specific immunogen. |
| <b>Concentration :</b>       | 1 mg/ml   |
| <b>Storage Stability :</b>   | -15°C to -25°C/1 year(Do not lower than -25°C)  |

**Observed Band :** 60kD

**Cell Pathway :** Cell\_Cycle\_G1S;Cell\_Cycle\_G2M\_DNA;

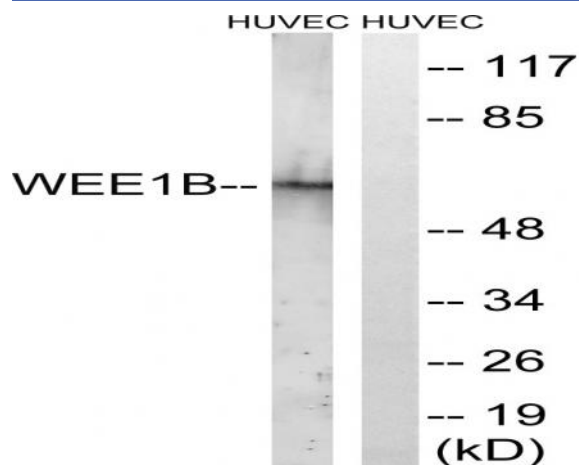
**Background :** catalytic activity:ATP + a [protein]-L-tyrosine = ADP + a [protein]-L-tyrosine phosphate.,function:Phosphorylates and inhibits CDC2. May act as a negative regulator of entry into mitosis (G2 to M transition).,PTM:Phosphorylated .,similarity:Belongs to the protein kinase superfamily. Ser/Thr protein kinase family. WEE1 subfamily.,similarity:Contains 1 protein kinase domain.,tissue specificity:Expressed in testis.,

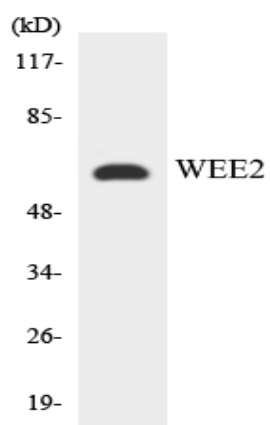
**Function :** catalytic activity:ATP + a [protein]-L-tyrosine = ADP + a [protein]-L-tyrosine phosphate.,function:Phosphorylates and inhibits CDC2. May act as a negative regulator of entry into mitosis (G2 to M transition).,PTM:Phosphorylated .,similarity:Belongs to the protein kinase superfamily. Ser/Thr protein kinase family. WEE1 subfamily.,similarity:Contains 1 protein kinase domain.,tissue specificity:Expressed in testis.,

**Subcellular Location :** Nucleus .

**Expression :** Expressed in oocytes (at protein level) (PubMed:29606300). May also be expressed in testis (PubMed:11029659).

## Products Images





Western blot analysis of the lysates from K562 cells using WEE2 antibody.