

## ZZZ3 Polyclonal Antibody

<b>Catalog No :</b>	YT4999
<b>Reactivity :</b>	Human;Mouse;Rat
<b>Applications :</b>	WB;ELISA
<b>Target :</b>	ZZZ3
<b>Gene Name :</b>	ZZZ3
<b>Protein Name :</b>	ZZ-type zinc finger-containing protein 3
<b>Human Gene Id :</b>	26009
<b>Human Swiss Prot No :</b>	Q8IYH5
<b>Mouse Gene Id :</b>	108946
<b>Mouse Swiss Prot No :</b>	Q6KAQ7
<b>Immunogen :</b>	The antiserum was produced against synthesized peptide derived from human ZZZ3. AA range:341-390
<b>Specificity :</b>	ZZZ3 Polyclonal Antibody detects endogenous levels of ZZZ3 protein.
<b>Formulation :</b>	Liquid in PBS containing 50% glycerol, 0.5% BSA and 0.02% sodium azide.
<b>Source :</b>	Polyclonal, Rabbit,IgG
<b>Dilution :</b>	WB 1:500 - 1:2000. ELISA: 1:5000. Not yet tested in other applications.
<b>Purification :</b>	The antibody was affinity-purified from rabbit antiserum by affinity-chromatography using epitope-specific immunogen.
<b>Concentration :</b>	1 mg/ml
<b>Storage Stability :</b>	-15°C to -25°C/1 year(Do not lower than -25°C)

**Observed Band :** 160kD

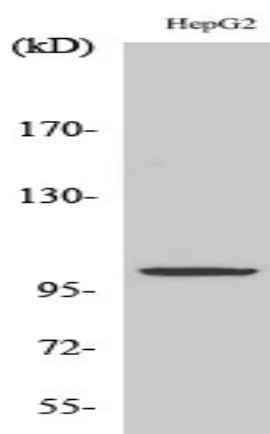
**Background :** PTM:Phosphorylated upon DNA damage, probably by ATM or ATR.,similarity:Contains 1 HTH myb-type DNA-binding domain.,similarity:Contains 1 ZZ-type zinc finger.,

**Function :** PTM:Phosphorylated upon DNA damage, probably by ATM or ATR.,similarity:Contains 1 HTH myb-type DNA-binding domain.,similarity:Contains 1 ZZ-type zinc finger.,

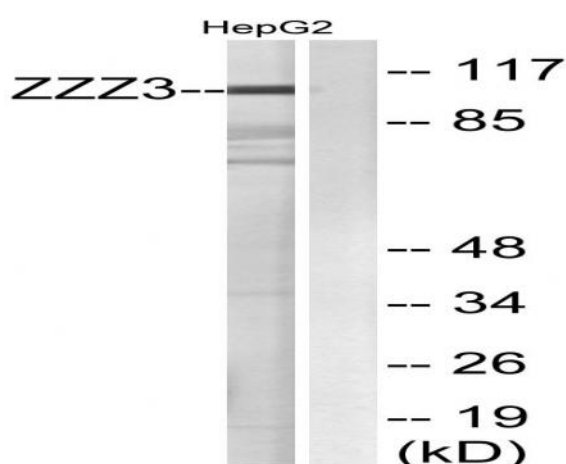
**Subcellular Location :** Nucleus .

**Expression :** Adipose tissue,Brain,Colon endothelium,Lymph,Placenta,Rectum tumor,Spleen,

## Products Images



Western Blot analysis of various cells using ZZZ3 Polyclonal Antibody. Secondary antibody(catalog#:RS0002) was diluted at 1:20000 cells nucleus extracted by Minute TM Cytoplasmic and Nuclear Fractionation kit (SC-003,Inventbiotech,MN,USA).



Western blot analysis of lysates from HepG2 cells, using ZZZ3 Antibody. The lane on the right is blocked with the synthesized peptide.