

ZNF76 Polyclonal Antibody

Catalog No :	YT4982
Reactivity :	Human;Rat;Mouse;
Applications :	IHC;IF;ELISA
Target :	ZNF76
Gene Name :	ZNF76
Protein Name :	Zinc finger protein 76
Human Gene Id :	7629
Human Swiss Prot No :	P36508
Mouse Swiss Prot No :	Q8BMU0
Immunogen :	The antiserum was produced against synthesized peptide derived from human ZNF76. AA range:116-165
Specificity :	ZNF76 Polyclonal Antibody detects endogenous levels of ZNF76 protein.
Formulation :	Liquid in PBS containing 50% glycerol, 0.5% BSA and 0.02% sodium azide.
Source :	Polyclonal, Rabbit,IgG
Dilution :	IHC 1:100 - 1:300. ELISA: 1:10000.. IF 1:50-200
Purification :	The antibody was affinity-purified from rabbit antiserum by affinity-chromatography using epitope-specific immunogen.
Concentration :	1 mg/ml
Storage Stability :	-15°C to -25°C/1 year(Do not lower than -25°C)
Molecularweight :	62kD

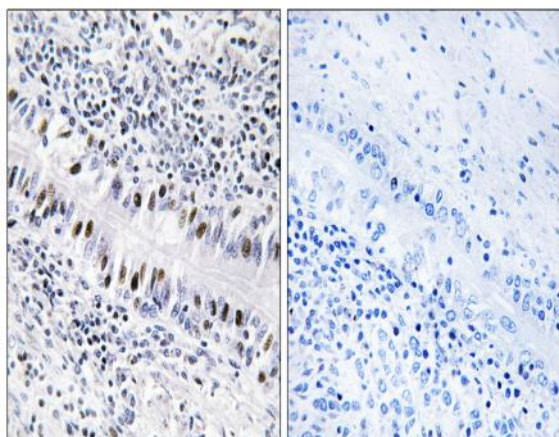
Background : function:May be involved in transcriptional regulation.,similarity:Belongs to the krueppel C2H2-type zinc-finger protein family.,similarity:Contains 7 C2H2-type zinc fingers.,tissue specificity:Testis.,

Function : function:May be involved in transcriptional regulation.,similarity:Belongs to the krueppel C2H2-type zinc-finger protein family.,similarity:Contains 7 C2H2-type zinc fingers.,tissue specificity:Testis.,

Subcellular Location : Nucleus .

Expression : Testis.

Products Images



Immunohistochemistry analysis of paraffin-embedded human lung carcinoma, using ZNF76 Antibody. The picture on the right is blocked with the synthesized peptide.