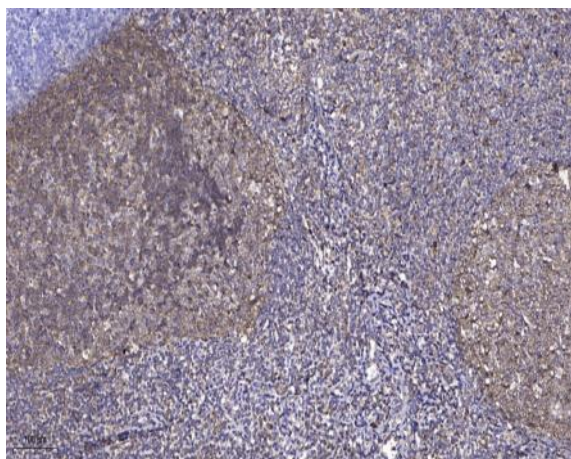


## ZNF600 Polyclonal Antibody

<b>Catalog No :</b>	YT4975
<b>Reactivity :</b>	Human;Rat;Mouse;
<b>Applications :</b>	IHC;IF;ELISA
<b>Target :</b>	ZNF600
<b>Fields :</b>	>>Herpes simplex virus 1 infection
<b>Gene Name :</b>	ZNF600
<b>Protein Name :</b>	Zinc finger protein 600
<b>Human Gene Id :</b>	162966
<b>Human Swiss Prot No :</b>	Q6ZNG1
<b>Immunogen :</b>	The antiserum was produced against synthesized peptide derived from human ZNF600. AA range:250-300
<b>Specificity :</b>	ZNF600 Polyclonal Antibody detects endogenous levels of ZNF600 protein.
<b>Formulation :</b>	Liquid in PBS containing 50% glycerol, 0.5% BSA and 0.02% sodium azide.
<b>Source :</b>	Polyclonal, Rabbit,IgG
<b>Dilution :</b>	IHC 1:100 - 1:300. ELISA: 1:10000.. IF 1:50-200
<b>Purification :</b>	The antibody was affinity-purified from rabbit antiserum by affinity-chromatography using epitope-specific immunogen.
<b>Concentration :</b>	1 mg/ml
<b>Storage Stability :</b>	-15°C to -25°C/1 year(Do not lower than -25°C)
<b>Molecularweight :</b>	83kD

<b>Background :</b>	function:May be involved in transcriptional regulation.,PTM:Phosphorylated upon DNA damage, probably by ATM or ATR.,similarity:Belongs to the krueppel C2H2-type zinc-finger protein family.,similarity:Contains 20 C2H2-type zinc fingers.,
<b>Function :</b>	function:May be involved in transcriptional regulation.,PTM:Phosphorylated upon DNA damage, probably by ATM or ATR.,similarity:Belongs to the krueppel C2H2-type zinc-finger protein family.,similarity:Contains 20 C2H2-type zinc fingers.,
<b>Subcellular Location :</b>	Nucleus .
<b>Expression :</b>	Amygdala,Lymphocyte,Uterus,

## Products Images



Immunohistochemical analysis of paraffin-embedded human tonsil. 1, Antibody was diluted at 1:200(4 ° overnight). 2, Tris-EDTA,pH9.0 was used for antigen retrieval. 3,Secondary antibody was diluted at 1:200(room temperature, 45min).