

ZNF592 Polyclonal Antibody

Catalog No :	YT4973
Reactivity :	Human;Mouse
Applications :	WB;IHC;IF;ELISA
Target :	ZNF592
Gene Name :	ZNF592
Protein Name :	Zinc finger protein 592
Human Gene Id :	9640
Human Swiss Prot No :	Q92610
Mouse Gene Id :	233410
Mouse Swiss Prot No :	Q8BHZ4
Immunogen :	The antiserum was produced against synthesized peptide derived from human ZNF592. AA range:961-1010
Specificity :	ZNF592 Polyclonal Antibody detects endogenous levels of ZNF592 protein.
Formulation :	Liquid in PBS containing 50% glycerol, 0.5% BSA and 0.02% sodium azide.
Source :	Polyclonal, Rabbit,IgG
Dilution :	WB 1:500 - 1:2000. IHC 1:100 - 1:300. ELISA: 1:40000.. IF 1:50-200
Purification :	The antibody was affinity-purified from rabbit antiserum by affinity-chromatography using epitope-specific immunogen.
Concentration :	1 mg/ml
Storage Stability :	-15°C to -25°C/1 year(Do not lower than -25°C)

Observed Band : 160kD

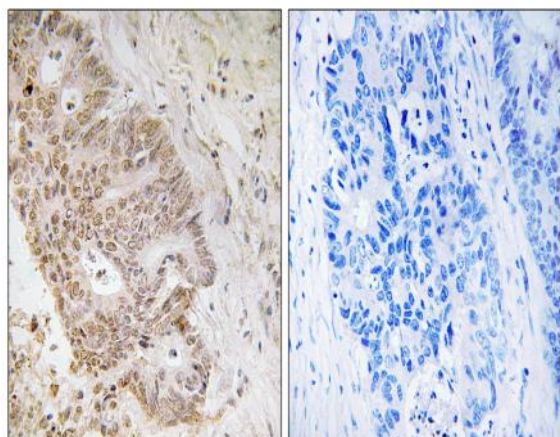
Background : zinc finger protein 592(ZNF592) Homo sapiens This gene is thought to play a role in a complex developmental pathway and the regulation of genes involved in cerebellar development. Mutations in this gene have been associated with autosomal recessive spinocerebellar ataxia. [provided by RefSeq, Jan 2011],

Function : function:May be involved in transcriptional regulation.,PTM:Phosphorylated upon DNA damage, probably by ATM or ATR.,similarity:Belongs to the krueppel C2H2-type zinc-finger protein family.,similarity:Contains 13 C2H2-type zinc fingers.,

Subcellular Location : Nucleus .

Expression : Widely expressed, with highest levels in skeletal muscle. Expressed throughout the central nervous system, including in the cerebellum and cerebellar vermis, with higher expression in the substantia nigra. Widely expressed in fetal tissues.

Products Images



Immunohistochemistry analysis of paraffin-embedded human colon carcinoma tissue, using ZNF592 Antibody. The picture on the right is blocked with the synthesized peptide.

