

## TSEN54 Polyclonal Antibody

<b>Catalog No :</b>	YT4759
<b>Reactivity :</b>	Human;Rat;Mouse;
<b>Applications :</b>	WB;IHC;IF;ELISA
<b>Target :</b>	TSEN54
<b>Gene Name :</b>	TSEN54
<b>Protein Name :</b>	tRNA-splicing endonuclease subunit Sen54
<b>Human Gene Id :</b>	283989
<b>Human Swiss Prot No :</b>	Q7Z6J9
<b>Mouse Swiss Prot No :</b>	Q8C2A2
<b>Immunogen :</b>	The antiserum was produced against synthesized peptide derived from human TSEN54. AA range:261-310
<b>Specificity :</b>	TSEN54 Polyclonal Antibody detects endogenous levels of TSEN54 protein.
<b>Formulation :</b>	Liquid in PBS containing 50% glycerol, 0.5% BSA and 0.02% sodium azide.
<b>Source :</b>	Polyclonal, Rabbit,IgG
<b>Dilution :</b>	WB 1:500 - 1:2000. IHC 1:100 - 1:300. ELISA: 1:20000.. IF 1:50-200
<b>Purification :</b>	The antibody was affinity-purified from rabbit antiserum by affinity-chromatography using epitope-specific immunogen.
<b>Concentration :</b>	1 mg/ml
<b>Storage Stability :</b>	-15°C to -25°C/1 year(Do not lower than -25°C)
<b>Observed Band :</b>	60kD

## Background :

This gene encodes a subunit of the tRNA splicing endonuclease complex, which catalyzes the removal of introns from precursor tRNAs. The complex is also implicated in pre-mRNA 3-prime end processing. Mutations in this gene result in pontocerebellar hypoplasia type 2.[provided by RefSeq, Oct 2009],

## Function :

disease:Defects in TSEN54 are the cause of pontocerebellar hypoplasia type 2A (PCH2A) [MIM:277470]. PCH type 2 is characterized by progressive microcephaly from birth combined with extrapyramidal dyskinesia and chorea, epilepsy, and normal spinal cord findings.,disease:Defects in TSEN54 are the cause of pontocerebellar hypoplasia type 4 (PCH4) [MIM:225753]. Pontocerebellar hypoplasia (PCH) is a heterogeneous group of disorders characterized by an abnormally small cerebellum and brainstem. PCH4 is characterized by severe course and early lethality.,function:Non-catalytic subunit of the tRNA-splicing endonuclease complex, a complex responsible for identification and cleavage of the splice sites in pre-tRNA. It cleaves pre-tRNA at the 5' and 3' splice sites to release the intron. The products are an intron and two tRNA half-molecules bearing 2',3' cyclic phosphate and 5'-OH termini. There a

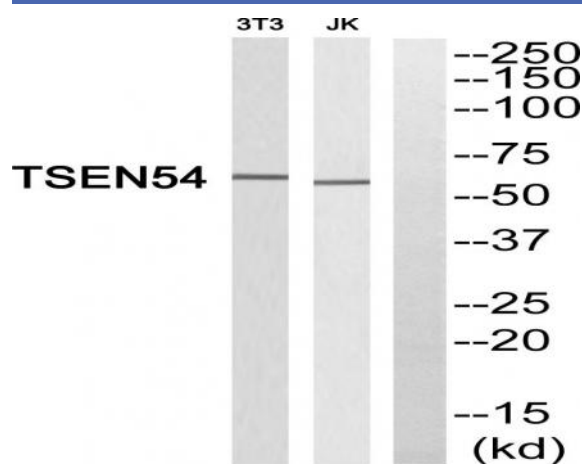
## Subcellular Location :

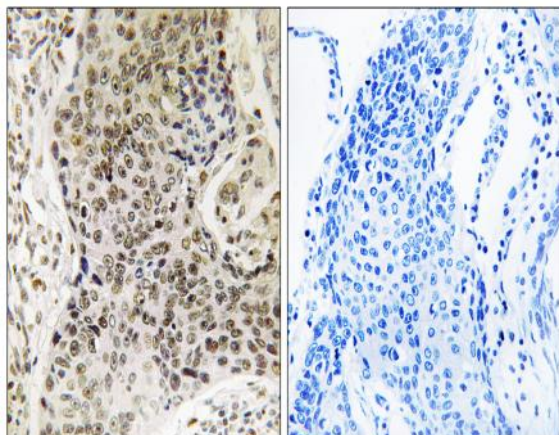
Nucleus . Nucleus, nucleolus . May be transiently localized in the nucleolus. .

## Expression :

Blood,Cerebellum,Uterus,

## Products Images





Immunohistochemistry analysis of paraffin-embedded human lung carcinoma, using TSEN54 Antibody. The lane on the right is blocked with the TSEN54 peptide.