

XE7 Polyclonal Antibody

Catalog No :	YT4912
Reactivity :	Human;Rat;Mouse;
Applications :	WB;ELISA
Target :	XE7
Gene Name :	AKAP17A
Protein Name :	A-kinase anchor protein 17A
Human Gene Id :	8227
Human Swiss Prot No :	Q02040
Immunogen :	Synthesized peptide derived from XE7 . at AA range: 590-670
Specificity :	XE7 Polyclonal Antibody detects endogenous levels of XE7 protein.
Formulation :	Liquid in PBS containing 50% glycerol, 0.5% BSA and 0.02% sodium azide.
Source :	Polyclonal, Rabbit,IgG
Dilution :	WB 1:500 - 1:2000. ELISA: 1:40000. Not yet tested in other applications.
Purification :	The antibody was affinity-purified from rabbit antiserum by affinity-chromatography using epitope-specific immunogen.
Concentration :	1 mg/ml
Storage Stability :	-15°C to -25°C/1 year(Do not lower than -25°C)
Observed Band :	80kD
Background :	A-kinase anchoring protein 17A(AKAP17A) Homo sapiens This locus encodes a protein kinase A anchoring protein. The encoded protein is part of the spliceosome complex and is involved in the regulation of alternate splicing in

some mRNA precursors. Alternatively spliced transcript variants have been identified for this gene.[provided by RefSeq, Sep 2010],

Function :

caution:Was originally (PubMed:1438229) thought to be a cell surface protein involved in B-cell activation.,function:Splice factor regulating alternative splice site selection for certain mRNA precursors.,miscellaneous:The gene encoding for this protein is located in the pseudoautosomal region 1 (PAR1) of X and Y chromosomes.,similarity:Contains 1 RRM (RNA recognition motif) domain.,subunit:Monomer. Component of the spliceosome. Interacts with ZRANB2 and SFRS1/ASF through its Arg/Ser-rich domain.,tissue specificity:Widely expressed. Found in heart, brain, lung, liver, skeletal muscle, kidney and pancreas. Expressed in activated B-cells and placenta.,

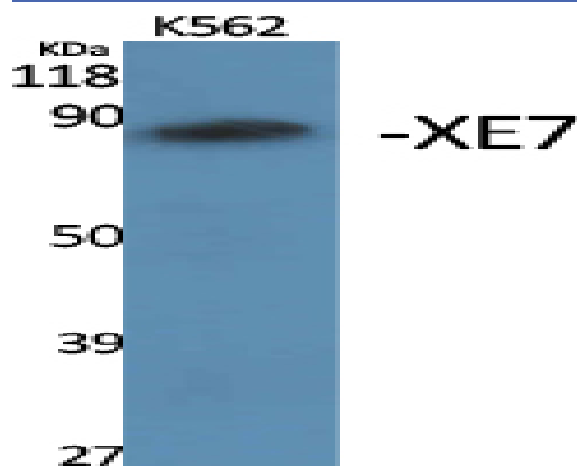
Subcellular Location :

Nucleus speckle .

Expression :

Widely expressed. Found in heart, brain, lung, liver, skeletal muscle, kidney and pancreas. Expressed in activated B-cells and placenta. Expressed in all cell lines tested including Jurkat-TAg, U-937 and HEK293 cells.

Products Images



Western Blot analysis of various cells using XE7 Polyclonal Antibody. Secondary antibody(catalog#:RS0002) was diluted at 1:20000 cells nucleus extracted by Minute TM Cytoplasmic and Nuclear Fractionation kit (SC-003, Invent biotech, MN, USA).