

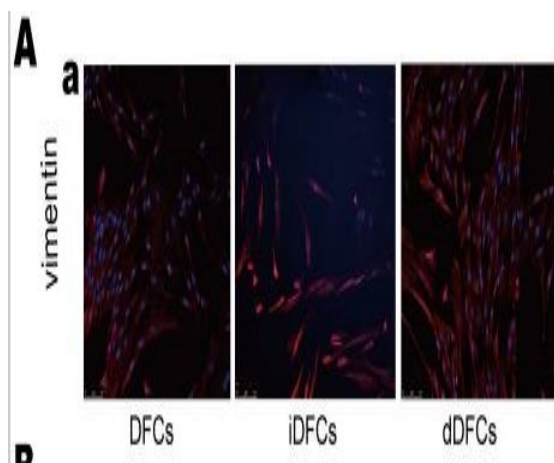
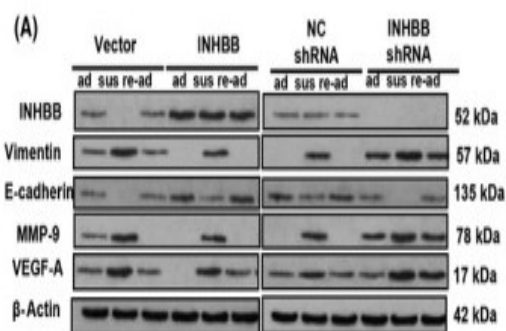
## Vimentin Polyclonal Antibody

<b>Catalog No :</b>	YT4880
<b>Reactivity :</b>	Human;Mouse;Rat
<b>Applications :</b>	WB;IHC;IF;ELISA
<b>Target :</b>	Vimentin
<b>Fields :</b>	>>Epstein-Barr virus infection;>>MicroRNAs in cancer
<b>Gene Name :</b>	VIM
<b>Protein Name :</b>	Vimentin
<b>Human Gene Id :</b>	7431
<b>Human Swiss Prot No :</b>	P08670
<b>Mouse Gene Id :</b>	22352
<b>Mouse Swiss Prot No :</b>	P20152
<b>Rat Gene Id :</b>	81818
<b>Rat Swiss Prot No :</b>	P31000
<b>Immunogen :</b>	The antiserum was produced against synthesized peptide derived from human Vimentin. AA range:56-105
<b>Specificity :</b>	Vimentin Polyclonal Antibody detects endogenous levels of Vimentin protein.
<b>Formulation :</b>	Liquid in PBS containing 50% glycerol, 0.5% BSA and 0.02% sodium azide.
<b>Source :</b>	Polyclonal, Rabbit,IgG
<b>Dilution :</b>	WB 1:500 - 1:2000. IHC 1:100 - 1:300. IF 1:200 - 1:1000. ELISA: 1:10000. Not yet tested in other applications.

<b>Purification :</b>	The antibody was affinity-purified from rabbit antiserum by affinity-chromatography using epitope-specific immunogen.
<b>Concentration :</b>	1 mg/ml
<b>Storage Stability :</b>	-15°C to -25°C/1 year(Do not lower than -25°C)
<b>Observed Band :</b>	50-57kD
<b>Background :</b>	This gene encodes a member of the intermediate filament family. Intermediate filamentents, along with microtubules and actin microfilaments, make up the cytoskeleton. The protein encoded by this gene is responsible for maintaining cell shape, integrity of the cytoplasm, and stabilizing cytoskeletal interactions. It is also involved in the immune response, and controls the transport of low-density lipoprotein (LDL)-derived cholesterol from a lysosome to the site of esterification. It functions as an organizer of a number of critical proteins involved in attachment, migration, and cell signaling. Mutations in this gene causes a dominant, pulverulent cataract.[provided by RefSeq, Jun 2009],
<b>Function :</b>	function:Vimentins are class-III intermediate filaments found in various non-epithelial cells, especially mesenchymal cells.,online information:Vimentin entry,PTM:One of the most prominent phosphoproteins in various cells of mesenchymal origin. Phosphorylation is enhanced during cell division, at which time vimentin filaments are significantly reorganized.,sequence caution:Intron retention.,similarity:Belongs to the intermediate filament family.,subunit:Homopolymer. Interacts with HCV core protein. Interacts with LGSN and SYNM.,tissue specificity:Highly expressed in fibroblasts, some expression in T- and B-lymphocytes, and little or no expression in Burkitt's lymphoma cell lines. Expressed in many hormone-independent mammary carcinoma cell lines.,
<b>Subcellular Location :</b>	Cytoplasm . Cytoplasm, cytoskeleton . Nucleus matrix . Cell membrane .
<b>Expression :</b>	Highly expressed in fibroblasts, some expression in T- and B-lymphocytes, and little or no expression in Burkitt's lymphoma cell lines. Expressed in many hormone-independent mammary carcinoma cell lines.

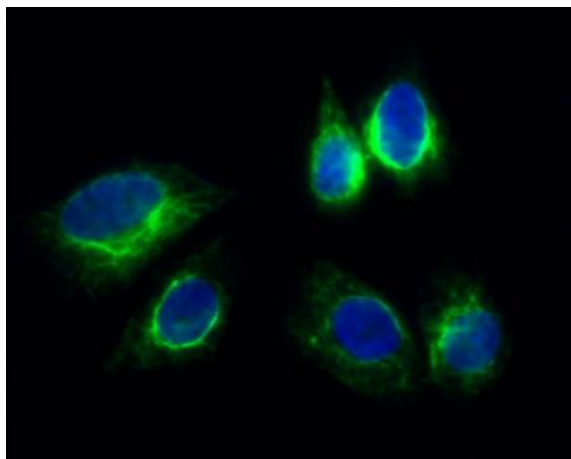
## Products Images

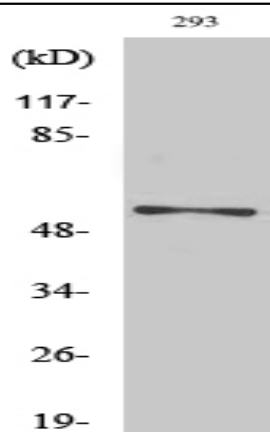
Zou, Guoying, et al. "Inhibin B suppresses anoikis resistance and migration through the transforming growth factor- $\beta$  signaling pathway in nasopharyngeal carcinoma." *Cancer science* 109.11 (2018): 3416.



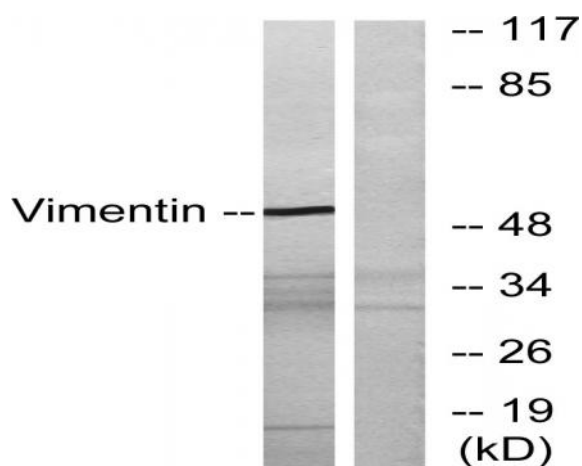
Wu, Yan, et al. "TrAmplification of Human Dental Follicle Cells by piggyBac Transposon-Mediated Reversible Immortalization System." *PloS one* 10.7 (2015): e0130937.

Immunofluorescence analysis of Hela cell. 1, Vimentin Polyclonal Antibody(green) was diluted at 1:200(4 ° overnight). 2, Goat Anti Rabbit Alexa Fluor 488 Catalog:RS3211 was diluted at 1:1000(room temperature, 50min). 3 DAPI(blue) 10min.

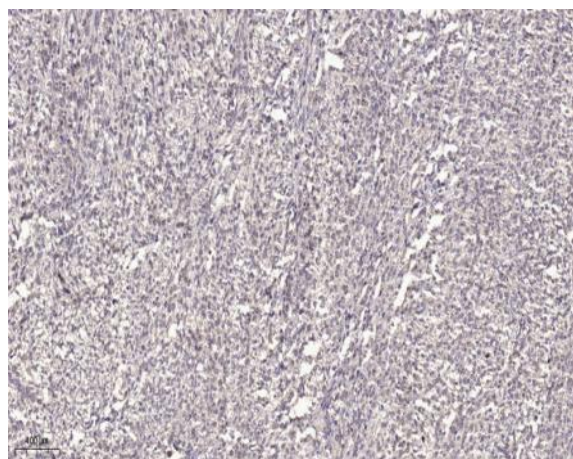




Western Blot analysis of various cells using Vimentin Polyclonal Antibody. Secondary antibody(catalog#:RS0002) was diluted at 1:20000



Western blot analysis of lysates from 293 cells, treated with EGF 200ng/ml 30', using Vimentin Antibody. The lane on the right is blocked with the synthesized peptide.



Immunohistochemical analysis of paraffin-embedded human small intestinal carcinoma tissue. 1,primary Antibody was diluted at 1:200(4° overnight). 2, Sodium citrate pH 6.0 was used for antigen retrieval(>98°C,20min). 3,Secondary antibody was diluted at 1:200