

VHX Polyclonal Antibody

Catalog No :	YT4877
Reactivity :	Human;Mouse
Applications :	WB;IHC;IF;ELISA
Target :	VHX
Gene Name :	DUSP22
Protein Name :	Dual specificity protein phosphatase 22
Human Gene Id :	56940
Human Swiss Prot No :	Q9NRW4
Mouse Gene Id :	105352
Mouse Swiss Prot No :	Q99N11
Immunogen :	The antiserum was produced against synthesized peptide derived from human DUSP22. AA range:121-170
Specificity :	VHX Polyclonal Antibody detects endogenous levels of VHX protein.
Formulation :	Liquid in PBS containing 50% glycerol, 0.5% BSA and 0.02% sodium azide.
Source :	Polyclonal, Rabbit,IgG
Dilution :	WB 1:500 - 1:2000. ELISA: 1:10000.. IF 1:50-200
Purification :	The antibody was affinity-purified from rabbit antiserum by affinity-chromatography using epitope-specific immunogen.
Concentration :	1 mg/ml
Storage Stability :	-15°C to -25°C/1 year(Do not lower than -25°C)

Observed Band : 21kD

Background :

catalytic activity:A phosphoprotein + H(2)O = a protein + phosphate.,catalytic activity:Protein tyrosine phosphate + H(2)O = protein tyrosine + phosphate.,function:Activates the Jnk signaling pathway. Dephosphorylates and deactivates p38 and stress-activated protein kinase/c-Jun N-terminal kinase (SAPK/JNK).,similarity:Belongs to the protein-tyrosine phosphatase family. Non-receptor class dual specificity subfamily.,similarity:Contains 1 tyrosine-protein phosphatase domain.,tissue specificity:Ubiquitous. Highest expression seen in heart, placenta, lung, liver, kidney and pancreas.,

Function :

catalytic activity:A phosphoprotein + H(2)O = a protein + phosphate.,catalytic activity:Protein tyrosine phosphate + H(2)O = protein tyrosine + phosphate.,function:Activates the Jnk signaling pathway. Dephosphorylates and deactivates p38 and stress-activated protein kinase/c-Jun N-terminal kinase (SAPK/JNK).,similarity:Belongs to the protein-tyrosine phosphatase family. Non-receptor class dual specificity subfamily.,similarity:Contains 1 tyrosine-protein phosphatase domain.,tissue specificity:Ubiquitous. Highest expression seen in heart, placenta, lung, liver, kidney and pancreas.,

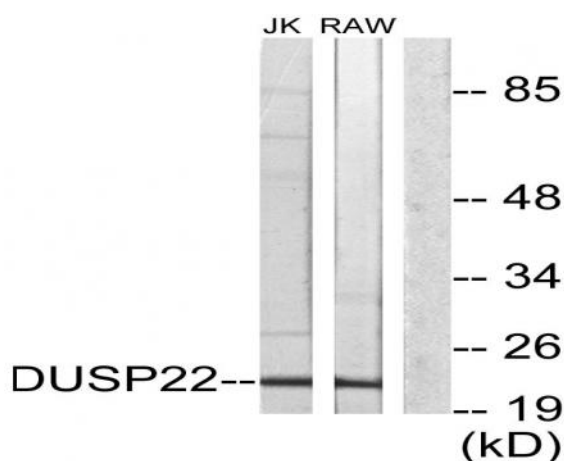
Subcellular Location :

Cytoplasm .

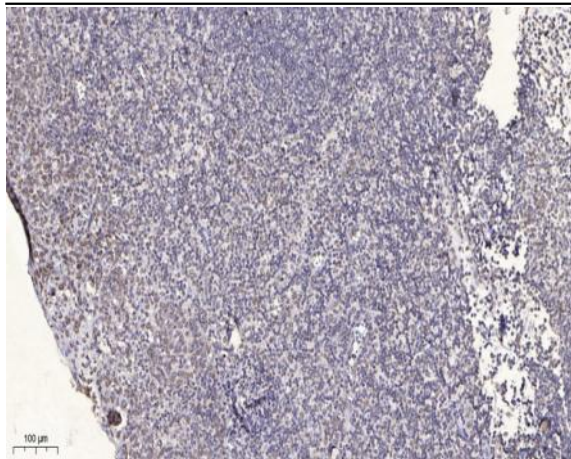
Expression :

Ubiquitous. Highest expression seen in heart, placenta, lung, liver, kidney and pancreas.

Products Images



Western blot analysis of lysates from RAW264.7 and Jurkat cells, using DUSP22 Antibody. The lane on the right is blocked with the synthesized peptide.



Immunohistochemical analysis of paraffin-embedded human tonsil. 1, Antibody was diluted at 1:200(4 ° overnight). 2, Tris-EDTA,pH9.0 was used for antigen retrieval. 3,Secondary antibody was diluted at 1:200(room temperature, 30min).