

USP40 Polyclonal Antibody

Catalog No :	YT4838
Reactivity :	Human;Rat;Mouse;
Applications :	WB;IHC;IF;ELISA
Target :	USP40
Gene Name :	USP40
Protein Name :	Ubiquitin carboxyl-terminal hydrolase 40
Human Gene Id :	55230
Human Swiss Prot No :	Q9NVE5
Mouse Swiss Prot No :	Q8BWR4
Immunogen :	The antiserum was produced against synthesized peptide derived from human USP40. AA range:1011-1060
Specificity :	USP40 Polyclonal Antibody detects endogenous levels of USP40 protein.
Formulation :	Liquid in PBS containing 50% glycerol, 0.5% BSA and 0.02% sodium azide.
Source :	Polyclonal, Rabbit,IgG
Dilution :	WB 1:500 - 1:2000. IHC 1:100 - 1:300. ELISA: 1:20000.. IF 1:50-200
Purification :	The antibody was affinity-purified from rabbit antiserum by affinity-chromatography using epitope-specific immunogen.
Concentration :	1 mg/ml
Storage Stability :	-15°C to -25°C/1 year(Do not lower than -25°C)
Observed Band :	140kD

Background :

Modification of cellular proteins by ubiquitin is an essential regulatory mechanism controlled by the coordinated action of multiple ubiquitin-conjugating and deubiquitinating enzymes. USP40 belongs to a large family of cysteine proteases that function as deubiquitinating enzymes (Quesada et al., 2004 [PubMed 14715245]).[supplied by OMIM, Mar 2008],

Function :

catalytic activity:Ubiquitin C-terminal thioester + H(2)O = ubiquitin + a thiol.,function:May be catalytically inactive.,similarity:Belongs to the peptidase C19 family.,tissue specificity:Broadly expressed.,

Subcellular

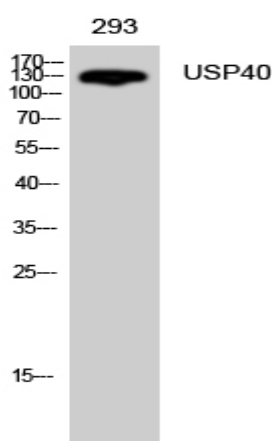
Location :

nucleus,cytoplasm,

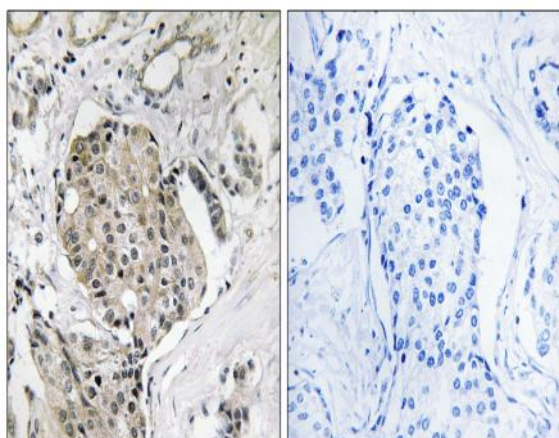
Expression :

Broadly expressed.

Products Images



Western Blot analysis of 293 cells using USP40 Polyclonal Antibody diluted at 1:500. Secondary antibody(catalog#:RS0002) was diluted at 1:20000



Immunohistochemistry analysis of paraffin-embedded human breast carcinoma, using USP40 Antibody. The picture on the right is blocked with the synthesized peptide.