

## Txk Polyclonal Antibody

<b>Catalog No :</b>	YT4790
<b>Reactivity :</b>	Human;Rat;Mouse;
<b>Applications :</b>	IHC;IF;ELISA
<b>Target :</b>	Txk
<b>Fields :</b>	>>Leukocyte transendothelial migration
<b>Gene Name :</b>	TXK
<b>Protein Name :</b>	Tyrosine-protein kinase TXK
<b>Human Gene Id :</b>	7294
<b>Human Swiss Prot No :</b>	P42681
<b>Mouse Swiss Prot No :</b>	P42682
<b>Immunogen :</b>	Synthesized peptide derived from the Internal region of human Txk.
<b>Specificity :</b>	Txk Polyclonal Antibody detects endogenous levels of Txk protein.
<b>Formulation :</b>	Liquid in PBS containing 50% glycerol, 0.5% BSA and 0.02% sodium azide.
<b>Source :</b>	Polyclonal, Rabbit,IgG
<b>Dilution :</b>	IHC 1:100 - 1:300. ELISA: 1:40000.. IF 1:50-200
<b>Purification :</b>	The antibody was affinity-purified from rabbit antiserum by affinity-chromatography using epitope-specific immunogen.
<b>Concentration :</b>	1 mg/ml
<b>Storage Stability :</b>	-15°C to -25°C/1 year(Do not lower than -25°C)

**Molecularweight :** 61kD

**Cell Pathway :** Leukocyte transendothelial migration;

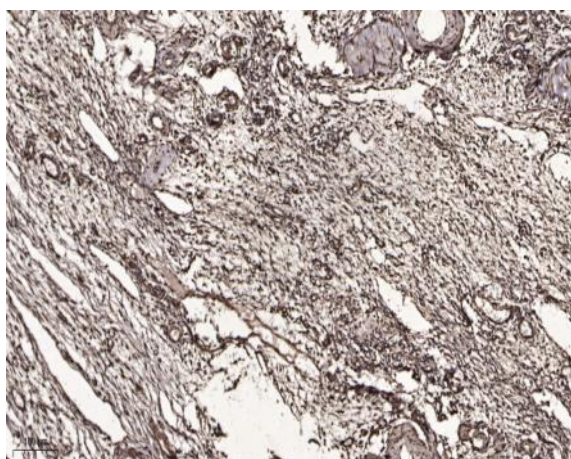
**Background :** catalytic activity:ATP + a [protein]-L-tyrosine = ADP + a [protein]-L-tyrosine phosphate.,similarity:Belongs to the protein kinase superfamily. Tyr protein kinase family. TEC subfamily.,similarity:Contains 1 protein kinase domain.,similarity:Contains 1 SH2 domain.,similarity:Contains 1 SH3 domain.,tissue specificity:Expressed in T-cells and some myeloid cell lines.,

**Function :** catalytic activity:ATP + a [protein]-L-tyrosine = ADP + a [protein]-L-tyrosine phosphate.,similarity:Belongs to the protein kinase superfamily. Tyr protein kinase family. TEC subfamily.,similarity:Contains 1 protein kinase domain.,similarity:Contains 1 SH2 domain.,similarity:Contains 1 SH3 domain.,tissue specificity:Expressed in T-cells and some myeloid cell lines.,

**Subcellular Location :** Cytoplasm . Nucleus . Cell membrane ; Peripheral membrane protein . Localizes in the vicinity of cell surface receptors in the plasma membrane after receptor stimulation. Translocates into the nucleus and enhances IFN-gamma gene transcription in T-cells.

**Expression :** Expressed in T-cells and some myeloid cell lines. Expressed in Th1/Th0 cells with IFN-gamma-producing potential.

## Products Images



Immunohistochemical analysis of paraffin-embedded human oophoroma. 1, Antibody was diluted at 1:200(4° overnight). 2, Tris-EDTA,pH9.0 was used for antigen retrieval. 3,Secondary antibody was diluted at 1:200(room temperature, 45min).