

Tip5 Polyclonal Antibody

Catalog No :	YT4663
Reactivity :	Human;Rat;Mouse;
Applications :	WB;IHC
Target :	Tip5
Gene Name :	BAZ2A
Protein Name :	Bromodomain adjacent to zinc finger domain protein 2A
Human Gene Id :	605682
Human Swiss Prot No :	Q9UIF9
Mouse Swiss Prot No :	Q91YE5
Immunogen :	The antiserum was produced against synthesized peptide derived from human BAZ2A. AA range:1281-1330
Specificity :	Tip5 Polyclonal Antibody detects endogenous levels of Tip5 protein.
Formulation :	Liquid in PBS containing 50% glycerol, 0.5% BSA and 0.02% sodium azide.
Source :	Polyclonal, Rabbit,IgG
Dilution :	WB 1:500-2000;IHC 1:50-300
Purification :	The antibody was affinity-purified from rabbit antiserum by affinity-chromatography using epitope-specific immunogen.
Concentration :	1 mg/ml
Storage Stability :	-15°C to -25°C/1 year(Do not lower than -25°C)
Observed Band :	210kD

Background :

function:May play a role in transcriptional regulation interacting with ISWI. May serve a specific role in maintaining or altering the chromatin structure of the rDNA locus.,PTM:Phosphorylated upon DNA damage, probably by ATM or ATR.,sequence caution:Contaminating sequence. Potential poly-A sequence.,similarity:Belongs to the WAL family.,similarity:Contains 1 bromo domain.,similarity:Contains 1 DDT domain.,similarity:Contains 1 MBD (methyl-CpG-binding) domain.,similarity:Contains 1 PHD-type zinc finger.,similarity:Contains 4 A.T hook DNA-binding domains.,subcellular location:Colocalizes with the basal RNA polymerase I transcription factor UBF in the nucleolus.,subunit:Together with SMARCA5, it forms a complex termed NoRC (nucleolar remodeling complex).,tissue specificity:Expressed at moderate levels in most tissues analyzed, including heart, brain, placenta, lung, skeletal muscle, kidney and pancreas.,

Function :

function:May play a role in transcriptional regulation interacting with ISWI. May serve a specific role in maintaining or altering the chromatin structure of the rDNA locus.,PTM:Phosphorylated upon DNA damage, probably by ATM or ATR.,sequence caution:Contaminating sequence. Potential poly-A sequence.,similarity:Belongs to the WAL family.,similarity:Contains 1 bromo domain.,similarity:Contains 1 DDT domain.,similarity:Contains 1 MBD (methyl-CpG-binding) domain.,similarity:Contains 1 PHD-type zinc finger.,similarity:Contains 4 A.T hook DNA-binding domains.,subcellular location:Colocalizes with the basal RNA polymerase I transcription factor UBF in the nucleolus.,subunit:Together with SMARCA5, it forms a complex termed NoRC (nucleolar remodeling complex).,tissue specificity:Expressed at moderate levels in most tissues analyzed, including heart, brain, placenta, lung, skeletal muscle, kidney

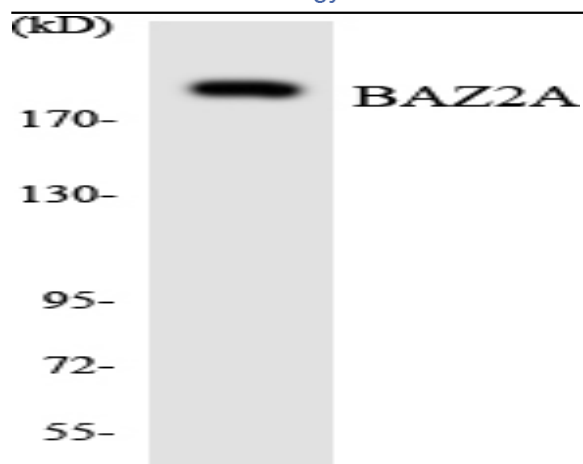
Subcellular Location :

Nucleus, nucleolus . Colocalizes with the basal RNA polymerase I transcription factor UBF in the nucleolus. .

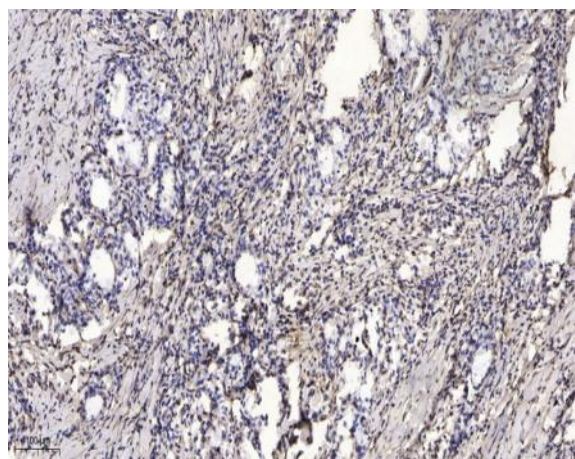
Expression :

Expressed at moderate levels in most tissues analyzed, including heart, brain, placenta, lung, skeletal muscle, kidney and pancreas.

Products Images



Western blot analysis of the lysates from HeLa cells using BAZ2A antibody.



Immunohistochemical analysis of paraffin-embedded human Gastric adenocarcinoma. 1, Antibody was diluted at 1:200(4° overnight). 2, Tris-EDTA,pH9.0 was used for antigen retrieval. 3,Secondary antibody was diluted at 1:200(room temperature, 45min).