

**SUHW3 Polyclonal Antibody**

<b>Catalog No :</b>	YT4468
<b>Reactivity :</b>	Human;Rat;Mouse;
<b>Applications :</b>	WB;IHC;IF;ELISA
<b>Target :</b>	SUHW3
<b>Gene Name :</b>	ZNF280C
<b>Protein Name :</b>	Zinc finger protein 280C
<b>Human Gene Id :</b>	55609
<b>Human Swiss Prot No :</b>	Q8ND82
<b>Mouse Swiss Prot No :</b>	Q6P3Y5
<b>Immunogen :</b>	The antiserum was produced against synthesized peptide derived from human ZNF280C. AA range:251-300
<b>Specificity :</b>	SUHW3 Polyclonal Antibody detects endogenous levels of SUHW3 protein.
<b>Formulation :</b>	Liquid in PBS containing 50% glycerol, 0.5% BSA and 0.02% sodium azide.
<b>Source :</b>	Polyclonal, Rabbit,IgG
<b>Dilution :</b>	WB 1:500 - 1:2000. IHC 1:100 - 1:300. ELISA: 1:40000.. IF 1:50-200
<b>Purification :</b>	The antibody was affinity-purified from rabbit antiserum by affinity-chromatography using epitope-specific immunogen.
<b>Concentration :</b>	1 mg/ml
<b>Storage Stability :</b>	-15 °C to -25 °C/1 year(Do not lower than -25 °C)
<b>Observed Band :</b>	85kD

## Background :

This gene encodes a member of the zinc finger domain-containing protein family. This family member contains multiple Cys2-His2(C2H2)-type zinc finger domains, the most common type of zinc finger domain that self-folds to form a beta-beta-alpha structure that binds a zinc ion. [provided by RefSeq, Aug 2011],

## Function :

function:May function as a transcription factor.,PTM:Phosphorylated upon DNA damage, probably by ATM or ATR.,sequence caution:Contaminating sequence. Potential poly-A sequence.,similarity:Contains 5 C2H2-type zinc fingers.,

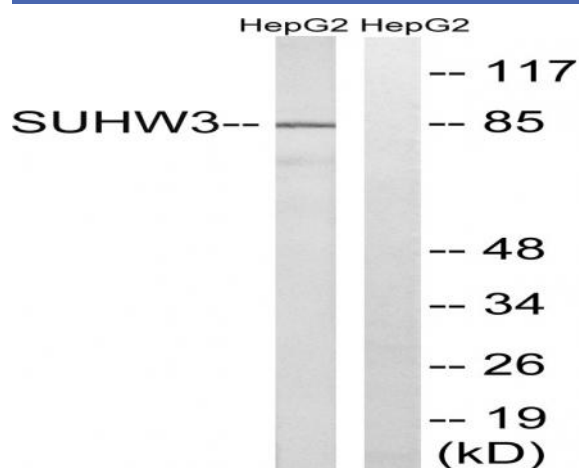
## Subcellular Location :

Nucleus .

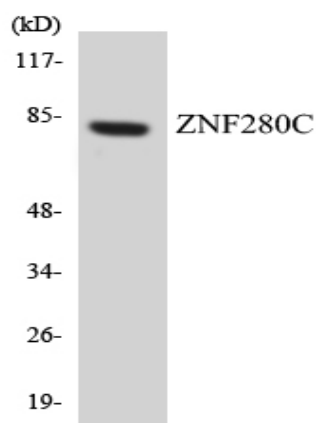
## Expression :

Colon,Testis,

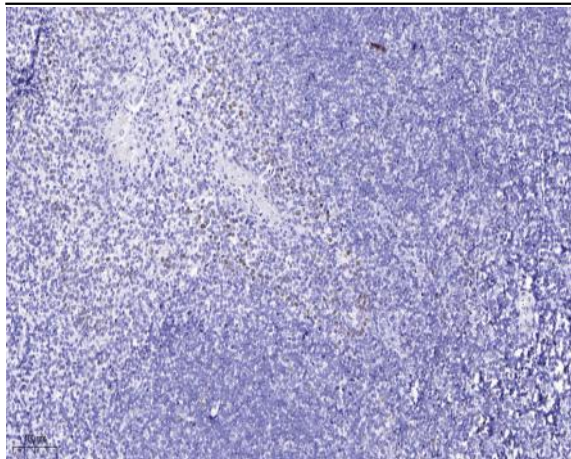
## Products Images



Western blot analysis of lysates from HepG2 cells, using ZNF280C Antibody. The lane on the right is blocked with the synthesized peptide.



Western blot analysis of the lysates from HeLa cells using ZNF280C antibody.



Immunohistochemical analysis of paraffin-embedded human tonsil. 1, Antibody was diluted at 1:200(4 ° overnight). 2, Tris-EDTA,pH9.0 was used for antigen retrieval. 3,Secondary antibody was diluted at 1:200(room temperature, 45min).