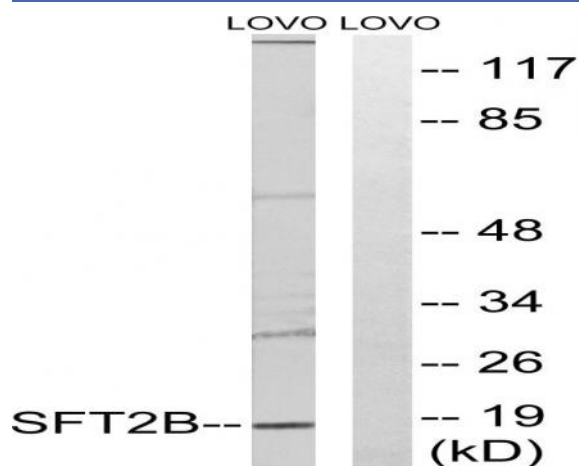


SFT2D2 Polyclonal Antibody

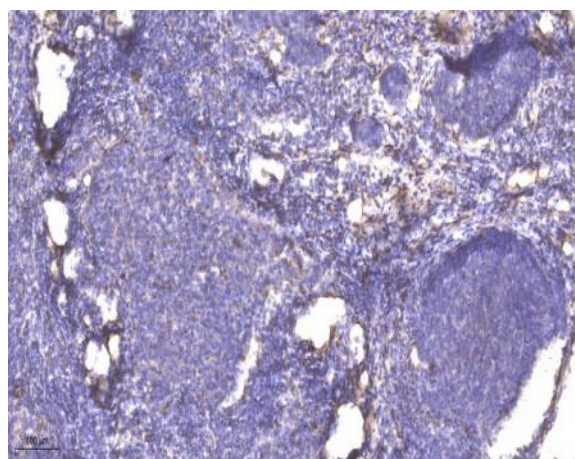
Catalog No :	YT4266
Reactivity :	Human;Mouse;Rat
Applications :	WB;ELISA;IHC
Target :	SFT2D2
Gene Name :	SFT2D2
Protein Name :	Vesicle transport protein SFT2B
Human Gene Id :	375035
Human Swiss Prot No :	O95562
Mouse Gene Id :	108735
Mouse Swiss Prot No :	Q8VD57
Rat Gene Id :	360868
Rat Swiss Prot No :	Q4FZV2
Immunogen :	The antiserum was produced against synthesized peptide derived from human SFT2B. AA range:61-110
Specificity :	SFT2D2 Polyclonal Antibody detects endogenous levels of SFT2D2 protein.
Formulation :	Liquid in PBS containing 50% glycerol, 0.5% BSA and 0.02% sodium azide.
Source :	Polyclonal, Rabbit,IgG
Dilution :	WB 1:500-2000;IHC 1:50-300; ELISA 2000-20000
Purification :	The antibody was affinity-purified from rabbit antiserum by affinity-chromatography using epitope-specific immunogen.

Concentration :	1 mg/ml
Storage Stability :	-15°C to -25°C/1 year(Do not lower than -25°C)
Observed Band :	18kD
Background :	function:May be involved in fusion of retrograde transport vesicles derived from an endocytic compartment with the Golgi complex.,similarity:Belongs to the SFT2 family.,
Function :	function:May be involved in fusion of retrograde transport vesicles derived from an endocytic compartment with the Golgi complex.,similarity:Belongs to the SFT2 family.,
Subcellular Location :	Membrane ; Multi-pass membrane protein .
Expression :	Lymph,

Products Images



Western blot analysis of lysates from LOVO cells, using SFT2B Antibody. The lane on the right is blocked with the synthesized peptide.



Immunohistochemical analysis of paraffin-embedded human cervical carcinoma. 1, Antibody was diluted at 1:200(4° overnight). 2, Tris-EDTA,pH9.0 was used for antigen retrieval. 3,Secondary antibody was diluted at 1:200(room temperature, 45min).