

SFRS11 Polyclonal Antibody

Catalog No :	YT4263
Reactivity :	Human;Mouse
Applications :	WB;ELISA;IHC
Target :	SFRS11
Gene Name :	SRSF11
Protein Name :	Serine/arginine-rich splicing factor 11
Human Gene Id :	9295
Human Swiss Prot No :	Q05519
Immunogen :	The antiserum was produced against synthesized peptide derived from human SFRS11. AA range:211-260
Specificity :	SFRS11 Polyclonal Antibody detects endogenous levels of SFRS11 protein.
Formulation :	Liquid in PBS containing 50% glycerol, 0.5% BSA and 0.02% sodium azide.
Source :	Polyclonal, Rabbit,IgG
Dilution :	WB 1:500-2000;IHC 1:50-300; ELISA 2000-20000
Purification :	The antibody was affinity-purified from rabbit antiserum by affinity-chromatography using epitope-specific immunogen.
Concentration :	1 mg/ml
Storage Stability :	-15°C to -25°C/1 year(Do not lower than -25°C)
Observed Band :	54kD
Background :	This gene encodes 54-kD nuclear protein that contains an arginine/serine-rich region similar to segments found in pre-mRNA splicing factors. Although the

function of this protein is not yet known, structure and immunolocalization data suggest that it may play a role in pre-mRNA processing. Alternative splicing results in multiple transcript variants encoding different proteins. In addition, a pseudogene of this gene has been found on chromosome 12.[provided by RefSeq, Sep 2010],

Function :

function:May function in pre-mRNA splicing.,similarity:Belongs to the splicing factor SR family.,similarity:Contains 1 RRM (RNA recognition motif) domain.,subcellular location:Colocalizes with spliceosome components.,subunit:Interacts with PUF60.,

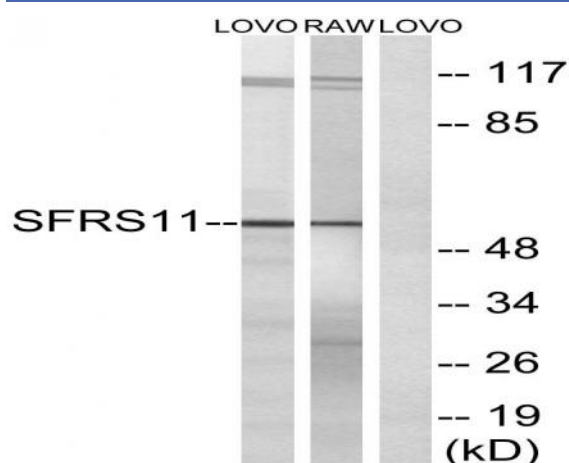
Subcellular Location :

Nucleus. Colocalizes with spliceosome components.

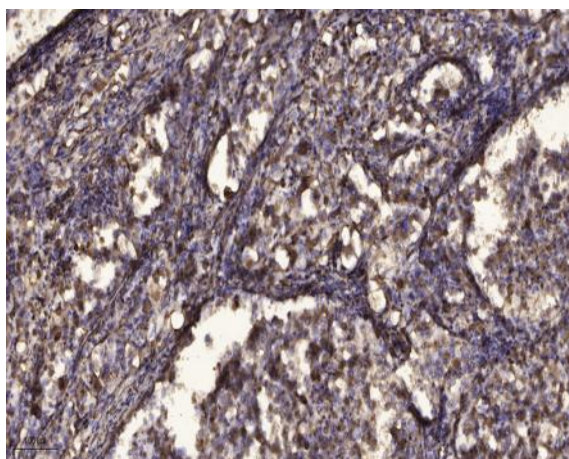
Expression :

Colon endothel,Epithelium,Fetal brain,Hepatoma,Human fetal

Products Images



Western blot analysis of lysates from LOVO and RAW264.7 cells, using SFRS11 Antibody. The lane on the right is blocked with the synthesized peptide.



Immunohistochemical analysis of paraffin-embedded human Squamous cell carcinoma of lung. 1, Antibody was diluted at 1:200(4° overnight). 2, Tris-EDTA,pH9.0 was used for antigen retrieval. 3,Secondary antibody was diluted at 1:200(room temperature, 45min).