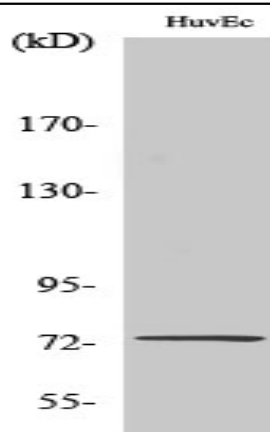


SSH3 Polyclonal Antibody

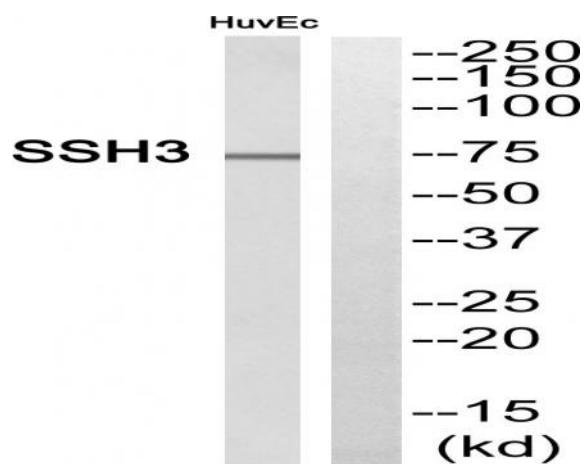
Catalog No :	YT4428
Reactivity :	Human;Mouse;Rat
Applications :	WB;IHC;IF;ELISA
Target :	SSH3
Fields :	>>Axon guidance;>>Regulation of actin cytoskeleton
Gene Name :	SSH3
Protein Name :	Protein phosphatase Slingshot homolog 3
Human Gene Id :	54961
Human Swiss Prot No :	Q8TE77
Mouse Gene Id :	245857
Mouse Swiss Prot No :	Q8K330
Rat Gene Id :	365396
Rat Swiss Prot No :	Q5XIS1
Immunogen :	The antiserum was produced against synthesized peptide derived from human SSH3. AA range:357-406
Specificity :	SSH3 Polyclonal Antibody detects endogenous levels of SSH3 protein.
Formulation :	Liquid in PBS containing 50% glycerol, 0.5% BSA and 0.02% sodium azide.
Source :	Polyclonal, Rabbit,IgG
Dilution :	WB 1:500 - 1:2000. IHC 1:100 - 1:300. ELISA: 1:40000.. IF 1:50-200

Purification :	The antibody was affinity-purified from rabbit antiserum by affinity-chromatography using epitope-specific immunogen.
Concentration :	1 mg/ml
Storage Stability :	-15°C to -25°C/1 year(Do not lower than -25°C)
Observed Band :	74kD
Cell Pathway :	Regulates Actin and Cytoskeleton;
Background :	The ADF (actin-depolymerizing factor)/cofilin family (see MIM 601442) is composed of stimulus-responsive mediators of actin dynamics. ADF/cofilin proteins are inactivated by kinases such as LIM domain kinase-1 (LIMK1; MIM 601329). The SSH family appears to play a role in actin dynamics by reactivating ADF/cofilin proteins in vivo (Niwa et al., 2002 [PubMed 11832213]).[supplied by OMIM, Mar 2008],
Function :	catalytic activity:A phosphoprotein + H(2)O = a protein + phosphate.,catalytic activity:Protein tyrosine phosphate + H(2)O = protein tyrosine + phosphate.,function:Protein phosphatase which may play a role in the regulation of actin filament dynamics. Can dephosphorylate and activate the actin binding/depolymerizing factor cofilin, which subsequently binds to actin filaments and stimulates their disassembly.,miscellaneous:Tyrosine phosphatase activity has not been demonstrated for this protein to date.,PTM:Phosphorylated upon DNA damage, probably by ATM or ATR.,similarity:Belongs to the protein-tyrosine phosphatase family.,similarity:Contains 1 tyrosine-protein phosphatase domain.,subunit:Does not bind to, or colocalize with, filamentous actin.,
Subcellular Location :	Cytoplasm, cytoskeleton . Nucleus .
Expression :	Cerebellum,Epithelium,Ovarian carcinoma,Uterus,

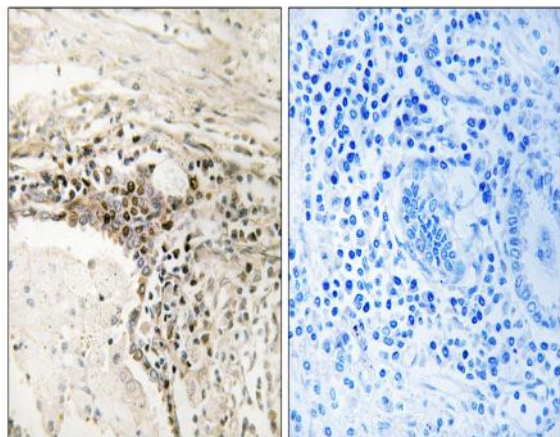
Products Images



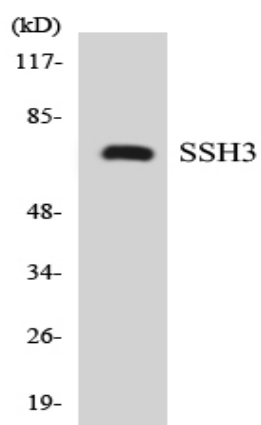
Western Blot analysis of various cells using SSH3 Polyclonal Antibody



Western blot analysis of SSH3 Antibody. The lane on the right is blocked with the SSH3 peptide.



Immunohistochemistryt analysis of paraffin-embedded human lung carcinoma, using SSH3 Antibody. The lane on the right is blocked with the SSH3 peptide.



Western blot analysis of the lysates from K562 cells using SSH3 antibody.