

## Spectrin $\beta$ V Polyclonal Antibody

<b>Catalog No :</b>	YT4382
<b>Reactivity :</b>	Human;Rat;Mouse;
<b>Applications :</b>	IHC;IF;ELISA
<b>Target :</b>	Spectrin $\beta$ V
<b>Gene Name :</b>	SPTBN5
<b>Protein Name :</b>	Spectrin beta chain non-erythrocytic 5
<b>Human Gene Id :</b>	51332
<b>Human Swiss Prot No :</b>	Q9NRC6
<b>Immunogen :</b>	The antiserum was produced against synthesized peptide derived from human SPTBN5. AA range:481-530
<b>Specificity :</b>	Spectrin $\beta$ V Polyclonal Antibody detects endogenous levels of Spectrin $\beta$ V protein.
<b>Formulation :</b>	Liquid in PBS containing 50% glycerol, 0.5% BSA and 0.02% sodium azide.
<b>Source :</b>	Polyclonal, Rabbit,IgG
<b>Dilution :</b>	IHC 1:100 - 1:300. ELISA: 1:40000.. IF 1:50-200
<b>Purification :</b>	The antibody was affinity-purified from rabbit antiserum by affinity-chromatography using epitope-specific immunogen.
<b>Concentration :</b>	1 mg/ml
<b>Storage Stability :</b>	-15°C to -25°C/1 year(Do not lower than -25°C)
<b>Molecularweight :</b>	417kD
<b>Background :</b>	similarity:Belongs to the spectrin family.,similarity:Contains 1 PH

domain.,similarity:Contains 2 CH (calponin-homology)  
domains.,similarity:Contains 31 spectrin repeats.,subcellular location:Detected prominently in the outer segments of photoreceptor rods and cones and in the basolateral membrane and cytosol of gastric epithelial cells.,subunit:Probably associates with an alpha chain.,tissue specificity:Expressed at very low levels in many tissues, with strongest expression in cerebellum, spinal cord, stomach, pituitary gland, liver, pancreas, salivary gland, kidney, bladder, and heart.,

## Function :

similarity:Belongs to the spectrin family.,similarity:Contains 1 PH  
domain.,similarity:Contains 2 CH (calponin-homology)  
domains.,similarity:Contains 31 spectrin repeats.,subcellular location:Detected prominently in the outer segments of photoreceptor rods and cones and in the basolateral membrane and cytosol of gastric epithelial cells.,subunit:Probably associates with an alpha chain.,tissue specificity:Expressed at very low levels in many tissues, with strongest expression in cerebellum, spinal cord, stomach, pituitary gland, liver, pancreas, salivary gland, kidney, bladder, and heart.,

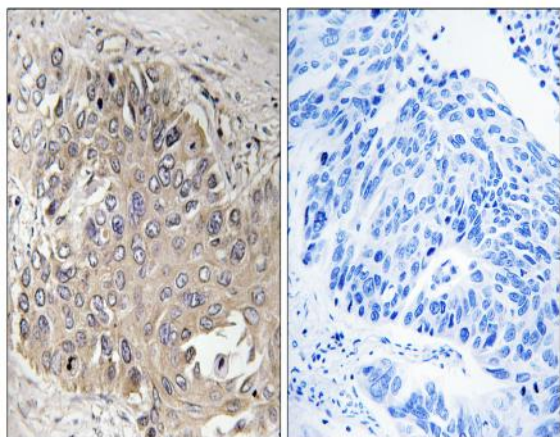
## Subcellular Location :

Cytoplasm, cytoskeleton. Detected prominently in the outer segments of photoreceptor rods and cones and in the basolateral membrane and cytosol of gastric epithelial cells.

## Expression :

Expressed at very low levels in many tissues, with strongest expression in cerebellum, spinal cord, stomach, pituitary gland, liver, pancreas, salivary gland, kidney, bladder, and heart.

## Products Images



Immunohistochemistry analysis of paraffin-embedded human lung carcinoma, using SPTBN5 Antibody. The picture on the right is blocked with the synthesized peptide.