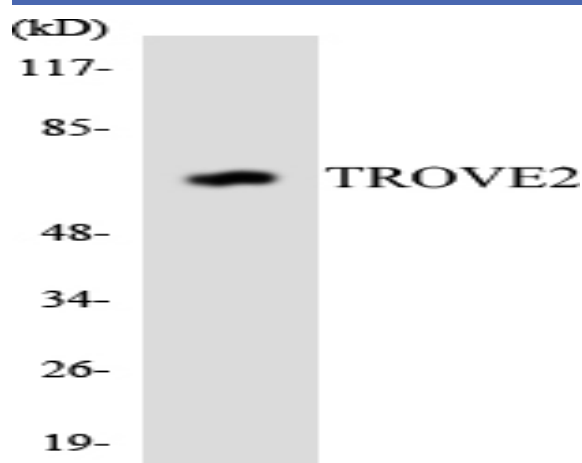


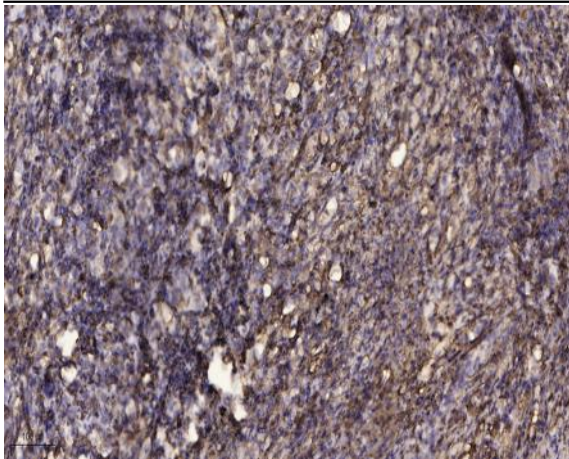
## RO60 Polyclonal Antibody

<b>Catalog No :</b>	YT4159
<b>Reactivity :</b>	Human;Rat;Mouse;
<b>Applications :</b>	WB;IHC
<b>Target :</b>	RO60
<b>Fields :</b>	>>Systemic lupus erythematosus
<b>Gene Name :</b>	TROVE2
<b>Protein Name :</b>	60 kDa SS-A/Ro ribonucleoprotein
<b>Human Gene Id :</b>	6738
<b>Human Swiss Prot No :</b>	P10155
<b>Mouse Swiss Prot No :</b>	O08848
<b>Immunogen :</b>	The antiserum was produced against synthesized peptide derived from human TROVE2. AA range:311-360
<b>Specificity :</b>	RO60 Polyclonal Antibody detects endogenous levels of RO60 protein.
<b>Formulation :</b>	Liquid in PBS containing 50% glycerol, 0.5% BSA and 0.02% sodium azide.
<b>Source :</b>	Polyclonal, Rabbit,IgG
<b>Dilution :</b>	WB 1:500-2000;IHC 1:50-300
<b>Purification :</b>	The antibody was affinity-purified from rabbit antiserum by affinity-chromatography using epitope-specific immunogen.
<b>Concentration :</b>	1 mg/ml
<b>Storage Stability :</b>	-15°C to -25°C/1 year(Do not lower than -25°C)

<b>Observed Band :</b>	70kD
<b>Cell Pathway :</b>	Systemic lupus erythematosus;
<b>Background :</b>	disease:Sera from patients with systemic lupus erythematosus (SLE) often contain antibodies that react with the normal cellular SSA2 protein as if this antigen was foreign.,function:RNA-binding protein that binds to several small cytoplasmic RNA molecules known as Y RNAs. May stabilize these RNAs from degradation.,PTM:Phosphorylated upon DNA damage, probably by ATM or ATR.,similarity:Belongs to the Ro 60 kDa family.,similarity:Contains 1 TROVE domain.,subunit:Found in a complex with PUF60 and Y5 RNA. Interacts with RIP11.,
<b>Function :</b>	disease:Sera from patients with systemic lupus erythematosus (SLE) often contain antibodies that react with the normal cellular SSA2 protein as if this antigen was foreign.,function:RNA-binding protein that binds to several small cytoplasmic RNA molecules known as Y RNAs. May stabilize these RNAs from degradation.,PTM:Phosphorylated upon DNA damage, probably by ATM or ATR.,similarity:Belongs to the Ro 60 kDa family.,similarity:Contains 1 TROVE domain.,subunit:Found in a complex with PUF60 and Y5 RNA. Interacts with RIP11.,
<b>Subcellular Location :</b>	Cytoplasm . Localized in cytoplasmic mRNP granules containing untranslated mRNAs. .
<b>Expression :</b>	Keratinocyte,Pre-B cell,Testis,

## Products Images





Immunohistochemical analysis of paraffin-embedded human Squamous cell carcinoma of lung. 1, Antibody was diluted at 1:200(4° overnight). 2, Tris-EDTA,pH9.0 was used for antigen retrieval. 3,Secondary antibody was diluted at 1:200(room temperature, 45min).